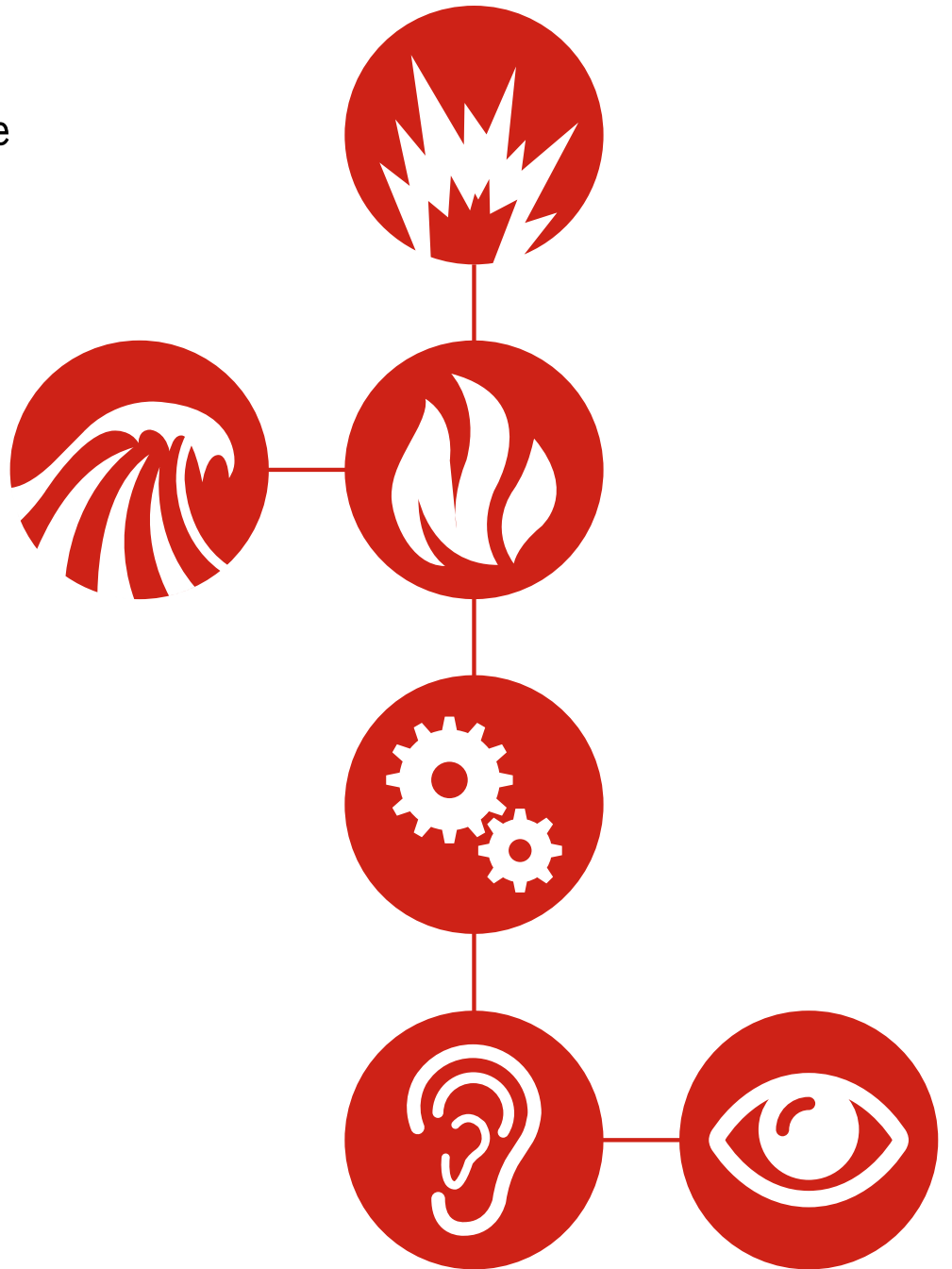


Explosion Proof
Hazardous Locations

Weatherproof & Marine
Ordinary Locations

Special Applications &
Wide Area Signals



e2s
warning signals

Explosion Proof - Hazardous Area

D1xCP1 Pull Stations
GNExCP7 Push Buttons
GNExCP6 Manual Call Points
STExCP8 Manual Call Points
BExCP3 Manual Call Points
D1xB2 Visual Signals
GNExB1 & B2 Visual Signals
STExB2 Visual Signals
BExBG Visual Signals
D1xS Sounders & D1xL Loudspeakers
GNExS Sounders & GNExL loudspeakers
STExS Sounders & STExL loudspeakers
BExS Sounders
BExL Loudspeakers
BExH Specialist Audible Products
D1xC Combination Signals
BExC Combination Signals
STExC Combination Signals
D1x plated assemblies
GNEx plated assemblies
STEx plated assemblies
BEx plated assemblies
D2x Visual & Audible Hazardous Locations
E2x Visual & Audible Hazardous Locations
IS-mini Intrinsically Safe
IS Audible & Visual Intrinsically Safe
IS Call Points Intrinsically Safe

Weatherproof & Marine - Ordinary Locations

AlertAlarm
AlertAlight
Sonora - Compact audible and visual signals
Sonora - Signal towers
Appello X user recordable - Alarm horn sounders
Appello X user recordable - Combination alarm horn sounders
M Visual & Audible Signals - Heavy industrial & marine
SpectrAlarm - Combination audible & visual signals
Spectra - Audible and combination signaling horns & buzzer
Spectra - Visual signals
Spectra - Panel mount visual range
Spectra - Traffic light/access control visual signals and alarm horn sounders
Hootronic & GPH - Electro-mechanical alternative

Special Applications & Wide Area

Hootronic - Electro-mechanical alternative with visual signal
Wide Area Sirens

E2S global network

Benefits of working with E2S

E2S is the world's leading independent warning signals manufacturer with over 30 years of engineering expertise. Our worldwide approved products combine the latest technology with leading industrial design and build quality to deliver signals you can depend on.

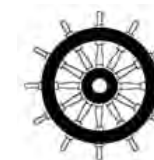
Working together with system integrators, engineers and end users we continuously innovate to develop the most comprehensive range of signaling products with substantial benefits such as ease of interface, quick installation, flexible customization and reliable performance. This is why our clients around the world trust E2S to protect their people and promote safety in their processes.

The E2S global network of distributors and partners, sustained by our highly efficient operations and logistics, provide fast product delivery and excellent local customer support.

Find out more at e2s.com



GOST-R



Explosion Proof Hazardous Locations

Model#		UL	ULC (fire listed)	cUL (safety)	FM	ATEX	IECEX	TR CU Ex EAC	INMETRO	VdS	GRP/PPS/ABS	Alloy	Stainless Steel	Class I Div 1	Class II Div 1	Class I Div 2	Class II Div 2	Zone 0	Zone 1	Zone 2	Zone 20	Zone 21	Zone 22	Page Number	
		Approval										Enclosure			Zone / Division										
Combination Alarm Horn Sounders and Beacons/Lights																									
D1xC1X05R	Xenon	•	•	•							•			•	•	•	•	•	•	•	•	•	•	•	6
D1xC1X10R	Xenon	•	•	•							•			•	•	•	•	•	•	•	•	•	•	•	6
D2xC1X05, D2xC1X10	Xenon	•	•	•		•	•				•			•	•	•	•	•	•	•	•	•	•	•	10
D2xC2LD2	LED	•	•	•		•	•				•			•	•	•	•	•	•	•	•	•	•	•	10
E2xC1X05	Xenon	•	•	•		•	•				•			•	•	•	•	•	•	•	•	•	•	•	14
E2xC1LD2	LED	•	•	•		•	•				•			•	•	•	•	•	•	•	•	•	•	•	14
IS-mC1	L.E.D.				•	•	•	•			•			•				•							16
BExCS110-05	Xenon					•	•	•	•		•								•	•		•	•	•	22
BExCS110-L2	L.E.D.					•	•	•	•		•								•	•		•	•	•	22
STExC1X05R	Xenon					•	•				•	•							•	•		•	•	•	44
Beacons, Strobes, Lights and LED's																									
D1xB2LD2	LED	•	•	•		•	•	•			•			•	•	•	•	•	•	•	•	•	•	•	4
D1xB2X05, 10, 15, 21	Xenon	•	•	•		•	•	•			•			•	•	•	•	•	•	•	•	•	•	•	4
D2xB1LD2	LED	•	•	•		•	•	•			•			•	•	•	•	•	•	•	•	•	•	•	12
D2xB1X05, 10	Xenon	•	•	•		•	•	•			•			•	•	•	•	•	•	•	•	•	•	•	12
E2xB05, 10	Xenon	•	•	•		•	•	•			•			•	•	•	•	•	•	•	•	•	•	•	14
E2xBL2	LED	•	•	•		•	•	•			•			•	•	•	•	•	•	•	•	•	•	•	14
IS-mB1	L.E.D.				•	•	•	•			•			•				•							16
BExBG05, 10, 15, 21	Xenon					•	•	•	•		•								•	•		•	•	•	24
BExBGL2	L.E.D.					•	•	•			•								•	•		•	•	•	24
GNExB1X05, X10, X15, X21	Xenon	•	•	•		•	•	•			•								•	•		•	•	•	34
GNExB2LD2	L.E.D.	•	•	•		•	•	•			•	•							•	•		•	•	•	34
STExB2X10, 15, 21	Xenon	•	•	•		•	•	•			•								•	•		•	•	•	46
STExB2RT1	Halogen					•	•	•			•								•	•		•	•	•	46
STExB2LD2	L.E.D.	•	•	•		•	•	•			•	•							•	•		•	•	•	46
Alarm Horn Sounders																									
D1xS1F, D1xS1R, D1xS2F		•	•	•		•	•	•			•			•	•	•	•	•	•	•	•	•	•	•	8
D2xS1		•	•	•		•	•	•			•			•	•	•	•	•	•	•	•	•	•	•	10
E2xS1F, E2xS2F		•	•	•		•	•	•			•			•	•	•	•	•	•	•	•	•	•	•	12
IS-mA1					•	•	•	•			•			•				•							14
BExS110, BExS120						•	•	•	•		•								•	•		•	•	•	24
BExS110-R						•	•	•			•								•	•		•	•	•	24
GNEXS1F, GNEXS1R, GNEXS2F						•	•	•			•								•	•		•	•	•	36
STExS1F, STExS1R, STExS2F						•	•	•			•	•							•	•		•	•	•	46
PA Loudspeakers																									
D1xL1F, D1xL2F		•	•	•		•	•	•			•			•	•	•	•	•	•	•	•	•	•	•	6
E2xL15, E2xL25		•	•	•		•	•	•			•			•	•	•	•	•	•	•	•	•	•	•	12
BExL15, BExL25						•	•	•			•								•	•		•	•	•	26
GNEXL1, GNEXL2						•	•	•			•								•	•		•	•	•	34
STEx L1, STExL2						•	•	•			•								•	•		•	•	•	44
Call Points / Pull Stations																									
BExCP3A/B-BG, PB, PT						•	•	•	•		•								•	•		•	•	•	32
GNECP7-PT, PM, PB		•	•	•		•	•	•			•								•	•		•	•	•	40
GNECP6A/B-BG, PB, PT						•	•	•			•								•	•		•	•	•	42
STExCP8B-BG, PB, PT, PM						•	•	•			•								•	•		•	•	•	50
Junction Boxes																									
GNEJ2						•	•	•	•		•								•	•		•	•	•	34
STExJ2						•	•	•	•		•	•							•	•		•	•	•	44

D1x Pull Stations

Class I/II Div 1/2



D1xCP1-PS

D1xCP1-PS Explosion Proof Manual Pull Stations.

The D1xCP1-PS is a cast aluminum manual alarm pull station available in a dual action configuration. These explosion proof stations have a DPDT switch mounted in heavy duty cast aluminum housings, complete with screw terminals that accept #22 to 12AWG field wiring.

The solid design and rugged construction of the D1xCP1-PS station makes it ideal for use in harsh operating environments and hazardous locations. The device has a NEMA type 4X rating for operation in extreme weather conditions and plant wash down applications. It is also UL Marine listed for operation in highly corrosive environments.

The D1xCP1-PS dual action model features a "PUSH" bar that moves inward, allowing the "PULL" handle to be grasped and operated by a single hand.

Range info

Material
Aluminum

Ingress Protection
Type: 4X

Cable entries
2 x 3/4"NPT

Approvals

Class I, Div. 1, Group B, C and D
Class II, Div. 1, Group E, F and G
Ta: -40° to 150°F

Pull Station

Ref: 1-24-110
D1xCP1-PS Pull Station
Double Pole, Double Throw (DPDT)
1 Amp @ 30 VDC
10 Amp @ 120 VAC
UL Marine Listed
5/16"h x 3 1/4"w x 3 7/8"d



GNEExCP7 Push Buttons

Class I/II Div 2, Class I Zone 1, Zone 21



GNEExCP7-PB



GNEExCP7-PT / GNEExCP7-PM

GNEExCP7-PT/PM/PB Hazardous Location Manual Push Buttons.

The GNEExCP7-PT is a UL38 fire alarm push button in a robust, corrosion proof GRP (glass reinforced polyester) enclosure. The push button mechanism, manufactured from stainless steel, is protected from accidental activation by a latching lift flap. Once activated, the push button is reset using a special tool.

Available in single switch (SPDT) or double switch (DPDT) configurations the enclosure features a large wiring area provided with either DIN rail terminals or the innovative E2S termination PCBA with multiple connectors for EOL and series resistors and diodes - all of which can be field installed or modified.

Globally approved by UL to NEC, CEC, ATEX and IECEx codes the SIL2 compliant GNEExCP7 family of manual alarm call points can be installed in all Class I/II Div 2 hazardous location and Class I Zone 1 and Zone 21 applications anywhere in the world.

The GNEExCP7-PM model offers a momentary switch action whilst the GNEExCP7-PB requires a twist and push action to activate.

Range info

Material
GRP (Glass Reinforced Polyester)

Ingress Protection
IP66, Type 4/4x/3R/13

Cable entries
3 x cable entries
Available as 3/4"NPT, 1/2"NPT, M20 or M25

Approvals

Class I, Div. 2, Group A, B, C and D
Class II, Div. 1, Group F and G
Class III, Div. 2
Class I Zone 1
Zone 21
IECEx & ATEX Zone 1 & 21
Ta: -55° to 70°C (-67° to + 158°F)

Pull Station

Ref: 1-24-160
GNEExCP7-PT Push Button - Tool reset
Ref: 1-24-170
GNEExCP7-PM Push Button - Tool reset
Ref: 1-24-180
GNEExCP7-PB Push Button - Tool reset



GNEx Manual Call Points

Zone 1 & 2



GNExCP6A-BG/GNExCP6B-BG



GNExCP6A-BG/GNExCP6B-BG



GNExCP6A-PB/GNExCP6B-PB



GNExCP6A-PT/GNExCP6B-PT

The ATEX & IECEx approved GNEx manual call point range is available in break glass, push button or tool reset versions. They are approved for Zone 1, 2, 21 and 22 hazardous areas for the control of fire and gas alarm systems.

All members of the GNEx call point family are certified as SIL 2 compliant to IEC 61508 (2010).

All types are available with single or double pole change over switches, EOL or series resistors, diode or Zener diodes or an L.E.D indicator and also with either single or double pole change over switches. The back box can be rotated to give one M20 side entry and dual M20 entries either at the top or bottom.

Alternative housing colors are available to meet specific requirements as are metalized polyester or stainless steel "Duty" labels.

For the BG break glass model a stainless steel lift flap can be specified.

Range Info:

Material

Corrosion proof, glass-reinforced polyester.

Ingress Protection

IP66

Fixings

Stainless steel.

Cable entries

2 x M20 top and 1 x M20 side.

Stopping Plugs

2 x Ex e nylon plugs as standard.
Brass and stainless steel plugs optional.

Approvals

Ex db eb IIC T6 Gb Ta = (-40°C +70°C)
Ex tb III C T75°C Db Ta = (-40°C +70°C)

Ex db eb mb IIC T4 Gb Ta = (-40°C to +65°C)
Ex tb IIIC T75°C Db Ta = (-40°C to +65°C)

ATEX, IECEx, EAC Ex, PESO, INMETRO

Break Glass Call Points

Ref: 1-24-010

GNExCP6A-BG Break Glass Call Point

120.0mm x 120.0mm x 79.0mm
4.73" x 4.73" x 3.11"
II 2G Ex e d IIC T6 Gb
II 2D Ex t IIIC T60°C Db IP66

Ref: 1-24-020

GNExCP6B/C-BG Break Glass Call Point (with EOL & series devices)

End of line and/or series monitoring resistors.
Diodes or Zener diodes or L.E.D. indicator.
Optional DIN rail mounted terminal blocks:
8 x 2.5mm².
120.0mm x 120.0mm x 79.0mm
4.73" x 4.73" x 3.11"
II 2G Ex e d mb IIC T4 Gb
II 2D Ex t IIIC T80°C Db IP66

Push Button Call Points

Ref: 1-24-030

GNExCP6A-PB Push Button Call Point

120.0mm x 120.0mm x 78.0
4 18/25" x 4 18/25" x 3"
II 2G Ex e d IIC T6 Gb
II 2D Ex t IIIC T60°C Db IP66

Ref: 1-24-040

GNExCP6B/C-PB Push Button Call Point (with EOL & series devices)

End of line and/or series monitoring resistors.
Diodes or Zener diodes or L.E.D. indicator.
Optional DIN rail mounted terminal blocks:
8 x 2.5mm².
120.0mm x 120.0mm x 79.0mm
4.73" x 4.73" x 3.11"
II 2G Ex e d mb IIC T4 Gb
II 2D Ex t IIIC T80°C Db IP66

Tool Reset Call Points

Ref: 1-24-050

GNExCP6A-PT Tool Reset Call Point

120.0mm x 120.0mm x 79.0mm
4.73" x 4.73" x 3.11"
II 2G Ex e d IIC T6 Gb
II 2D Ex t IIIC T60°C Db IP66

Ref: 1-24-060

GNExCP6B/C-PT Tool Reset Call Point (with EOL & series devices)

End of line and/or series monitoring resistors.
Diodes or Zener diodes or L.E.D. indicator.
Optional DIN rail mounted terminal blocks:
8 x 2.5mm².
120.0mm x 120.0mm x 79.0mm
4.73" x 4.73" x 3.11"
II 2G Ex e d mb IIC T4 Gb
II 2D Ex t IIIC T80°C Db IP66



STEx Manual Call Points

Zone 1 & 2



STExCP8-BG



STExCP8-PB



STExCP8-PT/STExCP6-PM



STExCP8-PT/STExCP6-PM

The STExCP8 family of manual call points feature 316L stainless steel enclosures designed for the harshest of environments. IECEx, ATEX and CUTR approved for Zone 1 and 2 hazardous areas for fire and gas alarm systems plus emergency shutdown and process control applications.

All versions are available with standard DIN rail terminals or the innovative E2S termination board providing dedicated connections for field installed EOL and/or series devices. The STExCP8-BG unit employs a safety glass element which protects the operator and removes the requirement for a hammer to activate the unit.

STExCP8-BG: Break glass manual call point.

STExCP8-PB: Latching dual action push button manual call point.

STExCP8-PT: Latching push button with tool reset manual call point.

STExCP8-PM: Momentary push button manual call point.

Range Info:

Material

316L Stainless Steel powder coated.

Ingress Protection

EN/IEC 60529 - IP66

Fixings

Stainless steel.

Cable entries

2 x M20 top and 1 x M20 side.

Stopping Plugs

2 x Ex d stainless steel plugs as standard.

Approvals

II 2G Ex db IIC Gb

II 2D Ex tb IIIC Db

ATEX, IECEx, EAC Ex, DNV, PESO, INMETRO

Break Glass Manual Call Point

Ref: 1-24-120

STExCP8-BG Break Glass Call Point

DIN rail 8 x 2.5mm² SAK2.5
DIN rail 8 x 2.5mm² SAK2.5 with EOL/
Series device terminations
127.0mm x 123.0mm x 68.0mm
5.00" x 4.84" x 2.68"

Single switch:

Ex db IIC T6 Gb Ta. -55°C to +70°C

Dual switch:

Ex db IIC T5 Gb Ta. -55°C to +70°C

Ex db IIC T6 Gb Ta. -55°C to +60°C

Break Glass Manual Call Point

Ref: 1-24-140

STExCP8-PB Dual Action Push Button

DIN rail 8 x 2.5mm² SAK2.5
DIN rail 8 x 2.5mm² SAK2.5 with EOL/
Series device terminations
127.0mm x 123.0mm x 171.0mm
5.00" x 4.84" x 6.73"

Single switch:

Ex db IIC T6 Gb Ta. -55°C to +70°C

Dual switch:

Ex db IIC T5 Gb Ta. -55°C to +70°C

Ex db IIC T6 Gb Ta. -55°C to +60°C

Tool Reset Push Button Call Point

Ref: 1-24-130

STExCP8-PT Tool Reset Push Button

DIN rail 8 x 2.5mm² SAK2.5
DIN rail 8 x 2.5mm² SAK2.5 with EOL/
Series device terminations
127.0mm x 123.0mm x 126.0mm
5.00" x 4.84" x 4.96"

Single switch:

Ex db IIC T6 Gb Ta. -55°C to +70°C

Dual switch:

Ex db IIC T5 Gb Ta. -55°C to +70°C

Ex db IIC T6 Gb Ta. -55°C to +60°C

Momentary Push Button Call Point

Ref: 1-24-130

STExCP8-PM Momentary Push Button

DIN rail 8 x 2.5mm² SAK2.5 or
DIN rail 8 x 2.5mm² SAK2.5 with EOL/
Series device terminations
127.0mm x 123.0mm x 126.0mm
5.00" x 4.84" x 4.96"

Single switch:

Ex db IIC T6 Gb Ta. -55°C to +70°C

Dual switch:

Ex db IIC T5 Gb Ta. -55°C to +70°C

Ex db IIC T6 Gb Ta. -55°C to +60°C



BEx Manual Call Points

Zone 1, 2, 21 & 22



BExCP3A-BG/BExCP3B-BG



BExCP3A-PB/BExCP3B-PB



BExCP3A-PT/BExCP3B-PT

The BEx manual call points are approved for Zone 1, 2, 21 and 22 hazardous areas for the control of fire and gas alarm systems.

All members of the BEx call point family are certified as SIL 2 compliant to IEC 61508 (2010).

Available with and without monitoring resistors the break glass, push button and tool reset versions are certified to ATEX and IECEx standards. The back box can be rotated to give one M20 side entry and dual M20 entries either on the top or bottom.

Range Info:

Material

Corrosion proof, marine grade, copper free LM6 (A413) aluminum.

Ingress Protection

IP66

Fixings

Stainless steel.

Cable entries

2 x M20 top/bottom and 1 x M20 left/right.

Stopping Plugs

2 x Ex e nylon plugs as standard.
Brass and stainless steel plugs optional.

Approvals

Ex db eb IIC T6 Gb Ta = (-40°C +70°C)
Ex tb III C T75°C Db Ta = (-40°C +70°C)

Ex db eb mb IIC T4 Gb Ta = (-40°C to +65°C)
Ex tb IIIC T75oC Db Ta = (-40°C to +65°C)

ATEX, IECEx, EAC Ex, PESO, INMETRO

Break Glass Call Point

Ref: 1-24-070

BExCP3A-BG/BExCP3B-BG

Break Glass Call Point
98.0mm x 98.0mm x 76.0mm
(3.86" x 3.86" x 2.99")

Push Button Call Point

Ref: 1-24-080

BExCP3A-PB/BExCP3B-PB

Push Button Call Point
98.0mm x 98.0mm x 76.0mm
(3.86" x 3.86" x 2.99")

Tool Reset Call Point

Ref: 1-24-090

BExCP3A-PT/BExCP3B-PT

Tool Reset Call Point
98.0mm x 98.0mm x 76.0mm
(3.86" x 3.86" x 2.99")



D1x Visual Signals Class I/II Div 1, Class, IECEx, ATEX Zone 1, Zone 21



D1xB2 beacons- surface mounting



D1xB2 beacons - pendant



D1xB2 beacons - bracket mounting allows beacon to be rotated in any orientation

The globally approved D1xB2 family from E2S offer the most comprehensive range of solutions for signaling in Class I/II Div 1 or Zone 1/20 explosion proof applications..

The D1xB2X05, X10, X15 and X21 Xenon strobe beacons offer a range of light outputs options including 5 Joule, 10 Joule, 15 Joule, 21 Joule Xenon plus multifunction LED - all with industry leading candela ratings.

UL approved to NEC, CEC, IECEx and ATEX codes the D1xB2 family of visual signals can be installed in all Class I/II Div 1 explosion proof and Class I Zone 1 and Zone 21 flameproof applications anywhere in the world. Safety integrity level compliance of SIL1 is standard on all D1xB2 beacons and SIL2 is available as an option on the Xenon strobe versions.

The lightweight, marine grade, enclosure has been designed to create the optimal visual signal. Its innovative construction includes both conduit or surface mounting capabilities - without the need for any additional accessories. For complete flexibility an optional stainless-steel bracket enables the light to be rotated and positioned in any orientation.

The extended operating temperature range of up to -67° to +176°F (-55°C to +80°C) ensures the D1xB2 beacons can be employed in the most arduous of applications.

The unique E2S automatic flash synchronization feature combined with the innovative in-rush limiting electronic circuit design and low operating current eliminate system design constraints and reduce cost.

Range Info:

Enclosure Material

Corrosion proof, marine grade, copper free LM6 aluminum, chromated and powder coated.

Enclosure color

Red (RAL3000) or Grey (RAL7038)

Ingress Protection

Type 4, 4X, 13, 3R, IP66)

Fixings

Stainless steel.

Mounting

Integrated pendant and surface mount capability. Optional ratchet adjustable stainless steel 'U' bracket.

Cable entries

1 x 3/4" NPT rear conduit entry
2 x 3/4" NPT side conduit entries
2 x M20 ISO side conduit/gland entries
Stopping plugs included (brass, nickel plated or stainless steel).

Approvals:

Class I Div 1 ABCD
Class II Div 1 EFG
Class III Div 1
Class I Zone 1 AEx db IIC
Zone 21 AEx tb IIIC
Ex db IIC
Ex tb IIIC
Ta -55°C to +80°C (-67° to + 176°F)
UL, cULs, ULC, IECEx, ATEX, CSFM, PESO,
Ex EAC

Xenon Strobes

Ref: 1-21-205

D1xB2X21

21 Joule Xenon Strobe

Voltage: 24Vdc (20-28Vdc), 115Vac
110-120Vac, 230Vac 220-240Vac
Effective candela to IES: 1,250.66cd
Private mode fire: 215.85 cd
Peak candela (calc): 2,100,000cd
Nominal Current: 1.13A
In rush: 1.5A - 5ms @ 24Vdc
Three flash rates: 1Hz, 1.5Hz & 2 x flash
Automatically synchronized
252.34mm x 150.0mm (9.93" x 5.91")

Ref: 1-21-203

D1xB2X10

10 Joule Xenon Strobe

Voltage: 24Vdc (20-28Vdc), 115Vac
110-120Vac, 230Vac 220-240Vac
Effective candela to IES: 645.21cd
Private mode fire: 69.81 cd
Peak candela (calc): 1,000,000cd
Nominal Current: 605mA
In rush: 990mA - 5ms @ 24Vdc
Three flash rates: 1Hz, 1.5Hz & 2 x flash
Automatically synchronized
252.34mm x 150.0mm (9.93" x 5.91")

Ref: 1-21-204

D1xB2X15

15 Joule Xenon Strobe

Voltage: 24Vdc (20-28Vdc), 115Vac
110-120Vac, 230Vac 220-240Vac
Effective candela to IES: 713.71cd
Private mode fire: 98.61 cd
Peak candela (calc): 1,500,000cd
Nominal Current: 835mA
In rush: 990mA - 5ms @ 24Vdc
Three flash rates: 1Hz, 1.5Hz & 2 x flash
Automatically synchronized
252.34mm x 150.0mm (9.93" x 5.91")

Ref: 1-21-202

D1xB2X05

5 Joule Xenon Strobe

Voltage: 24Vdc (20-28Vdc), 115Vac
110-120Vac, 230Vac 220-240Vac
Effective candela to IES: 156.65cd
Private mode fire: 20.44 cd
Peak candela (calc): 500,000cd
Nominal Current: 295mA
In rush: 920mA - 5ms @ 24Vdc
Three flash rates: 1Hz, 1.5Hz & 2 x flash
Automatically synchronized
252.34mm x 150.0mm (9.93" x 5.91")

LED Beacon

Ref: 1-21-206

D1xB2LD2

High Output LED Beacon

Voltage: 24Vdc (18-30Vdc), 115Vac
110-120Vac, 230Vac 220-240Vac
Effective candela to IES: 338cd
Nominal Current: 230mA
In rush: 1.22A - 2ms @ 24Vdc
Five flash rates: 1Hz, 1.5Hz, 2 Hz, double and triple flash
High and low power Steady modes
Three remotely selectable flash modes
Automatically synchronized
252.34mm x 150.0mm (9.93" x 5.91")



GNEx Visual Signals Zone 1, 2, 21 & 22



GNExB2X21



GNExB2X15



GNExB2X10



GNExB1X05



GNExB2LD2



GNExJ2

The GNEx explosion proof Xenon strobe beacon range is IECEx & ATEX approved. The robust IP66 corrosion proof GRP enclosure and extended temperature range ensures the GNExB1 and GNExB2 strobes are suitable for all Zone 1, 2, 21 & 22 hazardous location signaling applications.

The GNExB2 beacon range produces up to 902cd effective Candela - a very high output Xenon strobe flash as required for efficient signaling over greater distances and in high ambient light. The GNExB2 beacons are available in 10, 15 and 21 Joule variants. The GNExB1 is available as a compact 5 Joule Xenon.

For both beacon sizes the optically enhanced, field replaceable, color filter enhances the strobe and are constructed from UV stable PC. The GRP enclosure features a threaded flame path, multiple cable entries and a large termination area - all of which significantly reduce installation time.

Complementing the GNEx range is the GNExJ2 Ex d junction box. Suitable for any use the box features multiple cable entries and terminal configurations.

Select models are UL.cUL approved for Class I Zone 1/21 and Class I Div 2 applications.

Range Info:

Material

Corrosion proof, glass-reinforced polyester.

Ingress Protection

IP66

Fixings

Stainless steel.

Mounting

Surface mount

Cable entries

Dual & triple M20 ISO. Stopping plug included. M25, 1/2"NPT and 3/4" NPT available.

Approvals:

II 2G Ex db IIC Gb
II 2D Ex tb IIIC Db

ATEX, IECEx, PESO, INMETRO, EAC Ex

Xenon Strobe Beacons

Ref: 1-21-052

GNExB2X21 Xenon Strobe 21 Joule

20-28/42-54Vdc & 110-125V/220-240V ac.
Effective intensity 902.69cd
Amber, Blue, Clear, Green, Magenta, Red & Yellow lenses
157.4mm x 242.5mm (6.19" x 9.55")
II 2G Ex db IIC Gb T4 Ta -50°C to +70°C
II 2D Ex tb IIIC Db T130°C Ta-50°C to +70°C

Ref: 1-21-050

GNExB2X15 Xenon Strobe 15 Joule

20-28/42-54Vdc & 110-125V/220-240V ac.
Effective intensity 666.92cd
Amber, Blue, Clear, Green, Magenta, Red & Yellow lenses
157.4mm x 242.5mm (6.19" x 9.55")
II 2G Ex db IIC Gb T5 Ta -50°C to +40°C
II 2G Ex db IIC Gb T4 Ta -50°C to +70°C
II 2D Ex tb IIIC Db T120°C Ta-50°C to +70°C

Ref: 1-21-052

GNExB2X10 Xenon Strobe 10 Joule

20-28/42-54Vdc & 110-125V/220-240V ac.
Effective intensity 479.39cd
Amber, Blue, Clear, Green, Magenta, Red & Yellow lenses
157.4mm x 242.5mm (6.19" x 9.55")
II 2G Ex db IIC Gb T5 Ta -50°C to +40°C
II 2G Ex db IIC Gb T4 Ta -50°C to +70°C
II 2D Ex tb IIIC Db T120°C Ta-50°C to +70°C

Ref: 1-21-052

GNExB1X05 Xenon Strobe 5 Joule

20-28/42-54Vdc & 110-125V/220-240V ac.
Effective intensity 117.93cd
Amber, Blue, Clear, Green, Magenta, Red & Yellow lenses
121.3mm x 155.7mm (4.77" x 6.13)
II 2G Ex db IIC Gb T6 Ta -50°C to +40°C
II 2G Ex db IIC Gb T5 Ta -50°C to +55°C
II 2G Ex db IIC Gb T4 Ta -50°C to +70°C
II 2D Ex tb IIIC Db T110°C Ta-50°C to +70°C

Junction Box

Ref: 1-22-500

GNExJ2 Junction Box

60Vdc max & 260Vac 50/60Hz max.
5W max power
II 2G Ex db IIC Gb T6 Ta -50°C to +70°C
II 2D Ex tb IIIC Db T80°C Ta -50°C to +70°C
157.4mm x 108.5mm (6.19" x 4.27")

Multi-function LED Beacon

Ref: 1-21.054

GNExB2LD2 LED Multi-function Beacon

20-28/42-54Vdc & 110-125V/220-240V ac.
Effective intensity (steady): 174cd
Effective intensity (flash): 338cd
Amber, Blue, Clear, Green, Magenta, Red & Yellow lenses
157.4mm x 242.5mm (6.19" x 9.55")
II 2G Ex db IIC Gb T6 Ta -50°C to +65°C
II 2G Ex db IIC Gb T5 Ta -50°C to +70°C
II 2D Ex tb IIIC Db T85°C Ta -50°C to +70°C
157.4mm x 108.5mm (6.19" x 4.27")



STEx Visual Signals Zone 1, 2, 21 & 22



STExB2X21



STExB2X15



STExB2X10



STExB2RT1



STExB2LD2

The STEx explosion proof Xenon strobe beacon family is IECEx & ATEX approved. The robust IP66 corrosion proof 316L stainless steel enclosure ensures the STExB2 strobes are suitable for all Zone 1, 2, 21 & 22 hazardous location signaling applications.

The STExB2 beacon range produces up to 902cd effective candela - a very high output Xenon strobe flash as required for efficient signaling over greater distances and in high ambient light. The STExB2 beacons are available in 10, 15 and 21 Joule Xenon variants plus as a high output multi-function LED.

The optically enhanced, field replaceable, color filter enhances the strobe and are constructed from UV stable PC. The 316L stainless steel enclosure features a threaded flame path, multiple cable entries and a large termination area - all of which significantly reduce installation time.

Select models are UL.cUL approved for Class I Zone 1/21 and Class I Div 2 applications.

Range Info:

Material

316L stainless steel, chromated and powder coated.

Ingress Protection

IP66

Fixings

Stainless steel.

Mounting

Surface mount

Cable entries

4 x M20 ISO. Three 316 stainless steel stop-ping plugs included. Available with 1/2"NPT, 3/4"NPT or M25 adaptors.

Approvals

II 2G Ex db IIC Gb
II 2D Ex tb IIIC Db

ATEX, IECEx, INMETRO, DNV, EAC Ex

Xenon Strobe Beacons

Ref: 1-21-174

STExB2X21 Xenon Strobe 21 Joule

20-28/42-54Vdc & 115V/230V ac.
Effective intensity 902.69cd
Amber, Blue, Clear, Green, Magenta, Red & Yellow lenses
II 2G Ex db IIC Gb T4 Ta -50°C to +65°C
II 2G Ex db IIC Gb T3 Ta -50°C to +70°C
II 2D Ex tb IIIC Db T130°C Ta-50°C to +70°C
150.7mm x 240.5mm (5.93" x 9.47")

Ref: 1-21-172

STExB2X15 Xenon Strobe 15 Joule

20-28/42-54Vdc & 110-125V/220-240V ac.
Effective intensity 666.92cd
Amber, Blue, Clear, Green, Magenta, Red & Yellow lenses
II 2G Ex db IIC Gb T5 Ta -50°C to +40°C
II 2G Ex db IIC Gb T4 Ta -50°C to +70°C
II 2D Ex tb IIIC Db T120°C Ta-50°C to +70°C
150.7mm x 240.5mm (5.93" x 9.47")

Ref: 1-21-170

STExB2X10 Xenon Strobe 10 Joule

20-28/42-54Vdc & 110-125V/220-240V ac.
Effective intensity 479.39cd
Amber, Blue, Clear, Green, Magenta, Red & Yellow lenses
157.4mm x 242.5mm (6.19" x 9.55")
II 2G Ex db IIC Gb T5 Ta -50°C to +40°C
II 2G Ex db IIC Gb T4 Ta -50°C to +70°C
II 2D Ex tb IIIC Db T120°C Ta-50°C to +70°C
150.7mm x 240.5mm (5.93" x 9.47")

Halogen Rotating Beacon

Ref: 1-21-180

STExB2RT1 Rotating Beacon

12/24Vdc & 115-120V/230V ac.
Effective intensity 633cd
Amber, Blue, Clear, Green, Magenta, Red & Yellow lenses
II 2G Ex db IIC Gb T6 Ta -50°C to +40°C
II 2G Ex db IIC Gb T5 Ta -50°C to +55°C
II 2G Ex db IIC Gb T4 Ta -50°C to +70°C
II 2D Ex tb IIIC Db T110°C Ta-50°C to +70°C
150.7mm x 240.5mm (5.93" x 9.47")

Multi-function LED Beacon

Ref: 1-21.160

STExB2LD2 LED Multi-function Beacon

24Vdc & 115V/230V ac.
Effective intensity (steady): 174cd
Effective intensity (flash): 338cd
Amber, Blue, Clear, Green, Magenta, Red & Yellow lenses
157.4mm x 242.5mm (6.19" x 9.55")
II 2G Ex db IIC Gb T6 Ta -50°C to +65°C
II 2G Ex db IIC Gb T5 Ta -50°C to +70°C
II 2D Ex tb IIIC Db T85°C Ta -50°C to +70°C
150.7mm x 240.5mm (5.93" x 9.47")



BEx Visual Signals

Zone 1, 2, 21 & 22



BExBG



BExBG



BExBG



BExBG



BExCBG-G

The BEx beacons are ideal for general signaling duties whilst their robust construction makes installation in the harshest of environments possible.

The BExBG range includes 5, 10, 15 and 21 Joule Xenon strobe beacons. The 21 Joule version has three distinct user selectable flash patterns and for units with DC operating voltages a second stage flash pattern can be selected remotely. The BExBGL2 multi-function L.E.D. beacon features a total of 7 modes of operation: 5 flashing modes and a high and low power steady mode for use in indicator / status applications. Based on the mode selected the user can also select two alternative L.E.D. flash rates remotely.

All versions feature a stainless steel guard, stainless steel mounting bracket and stopping plug as standard. All models have dual M20 cable entries, large termination areas and an ingress protection level of up to IP67. The UV stable PC color lens filter is field replaceable.

For installations requiring defined safety integrity levels, the BExBG05D, BExBG10D and BExBG15D Xenon beacons are available in a SIL 2 compliant version.

The dual beacon BExCBG model can be configured with dual Xenon, LED or a mix of light sources to create a compact and efficient visual signal that provides either status indication or warning signals from one device.

Range Info:

Material

Corrosion proof, marine grade copper free LM6 aluminum, chromate and powder coat finish.

Ingress Protection

IP66/67

Fixings

Stainless steel.

Mounting

Ratchet adjustable stainless steel 'U' bracket.

Cable entries

Dual M20 ISO. One stopping plug included.

Approvals:

II 2G Ex d IIC T6-T3
II 2D Ex tD A21

ATEX, IECEx, INMETRO, EAC Ex

Xenon Strobe Beacons

Ref: 1-21-110

BExBG05 Xenon Beacon 5 Joule
12/24/48Vdc & 115/230Vac 50/60Hz.
Effective intensity 250cd
Amber, Blue, Clear, Green, Magenta,
Red & Yellow lenses
153.6mm x 259.0mm (6.05" x 10.20")

Ref: 1-21-120

BExBG10 Xenon Beacon 10 Joule
12/24/48Vdc & 115/230Vac 50/60Hz.
Effective Intensity 500cd
Amber, Blue, Clear, Green, Magenta,
Red & Yellow lenses
153.6mm x 259.0mm (6.05" x 10.20")

Ref: 1-21-130

BExBG15 Xenon Beacon 15 Joule
24/48Vdc & 115/230Vac 50/60Hz.
Effective intensity 750cd
Amber, Blue, Clear, Green, Magenta,
Red & Yellow lenses
153.6mm x 259.0mm (6.05" x 10.20")

Ref: 1-21-090

BExBG21 Xenon Beacon 21 Joule
24/48Vdc & 115/230Vac 50/60Hz.
Effective intensity 1,050cd
Amber, Blue, Clear, Green, Magenta,
Red & Yellow lenses
153.6mm x 259.0mm (6.05" x 10.20")

L.E.D. Beacons

Ref: 1-21-101

BExBGL2 L.E.D. Beacon
18-54Vdc & 115/230Vac 50/60Hz.
Array of 4 high output L.E.D.s
Effective intensity 160cd
Amber, Blue, Green, Magenta,
Red & Yellow lenses
153.6mm x 246.0mm (6.05" x 9.69")

Telephone Initiated Beacons

Ref: 1-21-150

BExTBG05 Telephone Beacon 5 Joule
115/230Vac 50/60Hz.
Effective intensity 250cd
Amber, Blue, Clear, Green, Magenta,
Red & Yellow lenses
153.6mm x 246.0mm (6.05" x 9.69")

Dual Xenon Strobe Beacons

Ref: 1-21-140

BExCBG05-05 Dual Xenon Beacon 5 Joule
12/24/48Vdc & 115/230Vac 50/60Hz.
Effective intensity 250cd x 2
Amber, Blue, Clear, Green, Magenta,
Red & Yellow lenses
165.0mm x 332.0mm (6.05" x 13.07")

Dual Xenon Strobe & LED Beacons

Ref: 1-21-141

BExCBGL2-05 Dual Xenon & LED Beacon
24Vdc & 115/230Vac 50/60Hz.
Effective intensity 250cd + 160cd
Amber, Blue, Clear, Green, Magenta,
Red & Yellow lenses
165.0mm x 332.0mm (6.05" x 13.07")

Dual LED Beacons

Ref: 1-21-142

BExCBGL2-L2 Dual LED Beacon
24Vdc & 115/230Vac 50/60Hz.
Effective intensity 160cd x 2
Amber, Blue, Clear, Green, Magenta,
Red & Yellow lenses
165.0mm x 332.0mm (6.05" x 13.07")



D1x Alarm Horn Sounders, Loudspeakers

Class I/II Div 1, Class, IECEx, ATEX Zone 1, Zone 20



D1xS1F
D1xL1F



D1xS2F
D1xL2F



D1xS2F
D1xL2F



D1xS1R

The powerful D1x alarm horn sounders are available with traditional flare horn design or the compact radial horn design which distributes the warning signal omni-directionally.

All versions offer 64 different first stage/channel alarm sounds which can be selected via an internal switch. Each tone can be remotely triggered e.g. via an external relay, to change to a second, third or fourth stage/channel alarm sound.

The D1xS1 alarm horn variants, in 24Vdc operating voltage, are also available approved for public mode fire alarm use.

The D1x PA loudspeaker driver and flare horn is available in 15 or 25W versions. Input options include 8 or 16 ohm low impedance and 70V or 100V line transformer.

The line transformer units feature multiple tappings for each version of the loudspeaker. Field replaceable flare - driver employs standard 1 3/8" -18 male thread coupling.

Range Info:

Enclosure Material

Corrosion proof, marine grade, copper free LM6 aluminum, chromated and powder coated.

Flare Material

ABS - UL94 V0 5VA FR

Enclosure & Flare color

Red (RAL3000) or Grey (RAL7038)

Ingress Protection

Type 4, 4X, 13, 3R, IP66

Fixings

Stainless steel.

Mounting

Ratchet adjustable stainless steel 'U' bracket.

Cable entries

1 x 1/2" NPT
2 x M20 ISO (or adapted to 1/2" or 3/4" NPT)
Stopping plugs included (brass, nickel plated or stainless steel).

Approvals:

Class I Division 1 Group ABCD
Class I Zone 1 IIC T6 Ta -40°C to +70°C
Class II Division 1 Group FG
Zone 20 IIIB
T6 Ta -40°C to +70°C

UL, cULs, ULC, IECEx, ATEX, CSFM, PESO

Alarm Sounders/Horns

Ref: 1-22-140

D1xS1F Flare Alarm Horn Sounders

24Vdc (10-30vdc) & 115/230Vac 50/60HZ
Max output: 117dB(A) @ 1m
- 108dB(A) @ 10ft/3m
64 alarm tones with 4 stages/channels
181.0mm x 285.0mm (7.13" x 11.20")

Ref: 1-22-160

D1xS2F Flare Alarm Horn Sounders

24Vdc (10-30vdc) & 115/230Vac 50/60HZ
Max output: 125dB(A) @ 1m
- 116dB(A) @ 10ft/3m
64 alarm tones with 4 stages/channels
220.0mm x 334.0mm (8.66" x 13.14")

Omnidirectional Alarm Horns

Ref: 1-22-150

D1xS1R Radial Horn Alarm Sounders

24Vdc (10-30vdc) & 115/230Vac 50/60HZ
Max output: 115dB(A) @ 1m
- 106dB(A) @ 10ft/3m
64 alarm tones with 4 stages/channels
122.0mm x 215.0mm (4.80" x 8.48")

PA Loudspeakers

Ref: 1-22-180

D1xL2F PA Loudspeakers 25W

Re-entrant flare horn
70V line transformer
8 or 16 Ohm low impedance
Rated SPL 119dB +/-3dB @ 25W @ 1m
220.0mm x 334.0mm (8.66" x 13.14")

Ref: 1-22-170

D1xL1F PA Loudspeakers 15W

Re-entrant flare horn
70V line transformer
8 or 16 Ohm low impedance
Rated SPL 113dB +/-3dB @ 15W @ 1m
181.0mm x 285.0mm (7.13" x 11.20")



GNEx Audible signals & PA loudspeakers

Zone 1 & 2



GNExS1



GNExS2



GNExS1-R



GNExL1



GNExL2

These high-powered alarm horn sounders offer sound level outputs of up to 123dB(A) at 1 metre with a choice of 45 alarm tones and 4 remotely selectable stages.

The alarm tone frequencies for the first 2 stages are independently selectable. The radial horn presents a compact form and distributes the warning signal omni-directionally.

Also available are three versions of PA loudspeaker: 8 ohm or 16 ohm and 70V/100V Line transformer. On the 70V/100V line transformer units there are multiple output tapings for each version of loudspeaker.

Range Info:

Material

Corrosion proof, glass-reinforced polyester.

Ingress Protection

IP67

Fixings

Stainless steel.

Mounting

Ratchet adjustable stainless steel 'U' bracket.

Cable entries

Dual M20 ISO. One stopping plug included.

Approvals:

II 2G Ex db IIC Gb

ATEX, IECEx, EAC Ex

Alarm Sounders/Horns

Ref: 1-22-010

GNExS1 Alarm Horn Sounder

10-30/38-60Vdc & 100-260Vdc/ac 50/60Hz.

Max output: 117dB(A) @ 1m

- 108dB(A) @ 10ft/3m

45 alarm tones with 4 stages/channels

182.7mm x 282.1mm (7.19" x 11.11")

II 2G Ex d IIC T4 Ta. -60° to +50°C

II 2G Ex d IIC T3 Ta. -60° to +70°C

II 2G Ex d IIB T6 Ta. -60° to +50°C

II 2G Ex d IIB T5 Ta. -60° to +65°C

II 2G Ex d IIB T4 Ta. -60° to +70°C

Ref: 1-22-020

GNExS2 Alarm Horn Sounder

10-30/38-60Vdc & 100-260Vac 50/60Hz.

Max output: 123dB(A) @ 1m

- 114dB(A) @ 10ft/3m

45 alarm tones with 4 stages/channels

182.7mm x 332.5mm (7.19" x 13.09")

II 2G Ex d IIC T4 Ta. -60° to +50°C

II 2G Ex d IIC T3 Ta. -60° to +58°C

II 2G Ex d IIB T6 Ta. -60° to +50°C

II 2G Ex d IIB T5 Ta. -60° to +58°C

Radial Horn Alarm Sounder

Ref: 1-22-030

GNExS1-R Radial Alarm Sounder/Horn

10-30/38-60Vdc & 100-260Vdc/ac 50/60Hz.

Max output: 115dB(A) @ 1m

- 106dB(A) @ 10ft/3m

45 alarm tones with 4 stages/channels

182.7mm x 213.9mm (7.19" x 8.42")

II 2G Ex d IIC T4 Ta. -60° to +50°C

II 2G Ex d IIC T3 Ta. -60° to +70°C

II 2G Ex d IIB T6 Ta. -60° to +50°C

II 2G Ex d IIB T5 Ta. -60° to +65°C

II 2G Ex d IIB T4 Ta. -60° to +70°C

PA Loudspeakers

Ref: 1-22-100

GNExL1 PA Loudspeaker 15W

70V/100V or 8 or 16 Ohm low impedance

Rated SPL 113dB +/-3dB @ 15W @ 1m

182.7mm x 282.1mm (7.19" x 11.11")

II 2G Ex d IIC T4 Ta. -60° to +50°C

II 2G Ex d IIC T3 Ta. -60° to +70°C

II 2G Ex d IIB T6 Ta. -60° to +50°C

II 2G Ex d IIB T5 Ta. -60° to +65°C

II 2G Ex d IIB T4 Ta. -60° to +70°C

Ref: 1-22-110

GNExL2 PA Loudspeaker 25W

70V/100V or 8 or 16 Ohm low impedance

Rated SPL 119dB +/-3dB @ 25W @ 1m

182.7mm x 332.5mm (7.19" x 13.09")

II 2G Ex d IIC T4 Ta. -60° to +50°C

II 2G Ex d IIC T3 Ta. -60° to +65°C

II 2G Ex d IIB T6 Ta. -60° to +50°C

II 2G Ex d IIB T5 Ta. -60° to +65°C



STEx Audible signals & PA loudspeakers

Zone 1, 2, 21 & 22



STExS1F



STExS2F



STExS1R



STExL1F



STExL2F

The STExS & STExL is an explosion proof family of audible signals. The robust IP66 corrosion proof 316L stainless steel enclosure ensures suitability for all Zone 1, 2, 21 & 22 hazardous location signaling applications.

The STExS1 and STExS2 are alarm horn sounders either employing a traditional flare horn design, or the more compact radial horn design; distributing the sound omni-directionally - ideal for confined spaces. The alarm horns are capable of a sound pressure level of up to 123dB(A) and contains 64 internationally recognized alarm tone frequencies. Using either positive or negative line switching systems can be configured to remotely trigger 4 alarm stages/channels enabling a single device to signal more than one warning.

Also available are the STExL1F & STExL2F PA loudspeaker as either an 8 ohm or 16 ohm and 70V or 100V Line transformer. The 70V and 100V line transformer versions feature multiple output tapings. The wide frequency range and dispersion characteristics ensure voice signals are clear and effective.

Range Info:

Material

316L stainless steel, chromated and powder coated.

Ingress Protection

IP66

Fixings

Stainless steel.

Mounting

Ratchet adjustable A4 316 stainless steel mounting 'U' bracket.

Cable entries

Triple M20 ISO. Two 316 stainless steel stopping plugs included. Available with 1/2"NPT, 3/4"NPT or M25 adaptors.

Approvals

II 2G Ex db IIC Gb
II 2D Ex tb IIIC Db

ATEX, IECEx, EAC Ex

Alarm Sounders/Horns

Ref: 1-22-180

STExS1F Alarm Horn Sounder

10-30Vdc & 100-240V ac 50/60Hz.

Max output: 117dB(A) @ 1m

- 108dB(A) @ 10ft/3m

64 alarm tones with 4 stages/channels

II 2G Ex db IIC T6 Ta. -50° to +65°C

II 2G Ex db IIC T5 Ta. -50° to +70°C

II 2D Ex tb IIIC Db T85°C Ta. -50° to +70°C

181.6 x 257.1mm (7.15" x 10.1")

Ref: 1-22-190

STExS2F Alarm Horn Sounder

10-30/38-60Vdc & 100-260Vac 50/60Hz.

Max output: 123dB(A) @ 1m

- 114dB(A) @ 10ft/3m

64 alarm tones with 4 stages/channels

II 2G Ex db IIC Gb T6 Ta -50° to +45°C

II 2G Ex db IIC Gb T5 Ta -50° to +60°C

II 2G Ex db IIC Gb T4 Ta -50° to +70°C

II 2D Ex tb IIIC Db T105°C Ta -50° to +70°C

219.6 x 307.5mm (7.15" x 12.11")

Radial Horn Alarm Sounder

Ref: 1-22-185

STExS1R Radial Alarm Sounder/Horn

10-30Vdc & 100-240V ac 50/60Hz.

Max output: 115dB(A) @ 1m

- 106dB(A) @ 10ft/3m

64 alarm tones with 4 stages/channels

II 2G Ex db IIC T6 Ta. -50° to +65°C

II 2G Ex db IIC T5 Ta. -50° to +70°C

II 2D Ex tb IIIC Db T85°C Ta. -50° to +70°C

136.0 x 187.9mm (5.35" x 7.40")

PA Loudspeakers

Ref: 1-22-190

STExL1F PA Loudspeaker 15W

70V/100V or 8 or 16 Ohm low impedance

Rated SPL 113dB +/-3dB @ 15W @ 1m

II 2G Ex db IIC T6 Ta. -50° to +55°C

II 2G Ex db IIC T5 Ta. -50° to +70°C

II 2D Ex tb IIIC Db T95°C Ta. -50° to +70°C

181.6 x 257.1mm (7.15" x 10.1")

Ref: 1-22-210

STExL2F PA Loudspeaker 25W

70V/100V or 8 or 16 Ohm low impedance

Rated SPL 119dB +/-3dB @ 25W @ 1m

II 2G Ex db IIC Gb T6 Ta -50° to +45°C

II 2G Ex db IIC Gb T5 Ta -50° to +60°C

II 2G Ex db IIC Gb T4 Ta -50° to +70°C

II 2D Ex tb IIIC Db T105°C Ta -50° to +70°C

219.6 x 307.5mm (7.15" x 12.11")



BEx Audible Signals

Zone 1, 2, 21 & 22



BExS110



BExS120



BExS110-R



BExTS110

The powerful BEx alarm horn sounders are available with traditional flare horn design or radial horn design which distributes the warning signal omni-directionally in a compact form.

All versions offer 32 different first stage alarm sounds which can be selected via an internal switch. Each tone one can be remotely triggered to change to a second or third stage alarm sound.

For installations requiring defined safety integrity levels the BExS110 is available in a SIL 2 compliant version.

The BExTS110 telephone initiated version has a ring-tone circuit that senses the ringing voltage on the telephone line and switches the supply onto signal until the telephone is answered. The sound can be continuous or it can follow the telephone ring.

Range Info:

Material

Corrosion proof, marine grade copper free LM6 aluminum, chromate and powder coat finish.

Ingress Protection

IP66/67

Fixings

Stainless steel.

Mounting

Ratchet adjustable stainless steel 'U' bracket.

Cable entries

Dual M20 ISO. One stopping plug included.

Approvals:

II 2G Ex d IIC T4
II 2D Ex tD A21

ATEX, IECEX, INMETRO, EAC Ex, VdS, MED

Alarm Sounders/Horns

Ref: 1-22-040

BExS110 Alarm Horn Sounders

12/24/48Vdc & 115/230Vac 50/60HZ.

Max output: 117dB(A) @ 1m

- 108dB(A) @ 10ft/3m

32 alarm tones with 3 stages/channels

181.0mm x 275.0mm (7.13" x 10.83")

Ref: 1-22-050

BExS120 Alarm Horn Sounders

12/24/48Vdc & 115/230Vac 50/60HZ.

Max output: 121dB(A) @ 1m

- 112dB(A) @ 10ft/3m

32 alarm tones with 3 stages/channels

220.0mm x 326.0mm (8.66" x 12.83")

Omnidirectional Alarm Horns

Ref: 1-22-060

BExS110-R Radial Output Alarm Sounders

12/24/48Vdc & 115/230Vac 50/60HZ.

Max output: 117dB(A) @ 1m

- 108dB(A) @ 10ft/3m

32 alarm tones with 3 stages/channels

154.1mm x 194.0mm (6.07" x 7.64")

Telephone Initiated Alarm Horn

Ref: 1-22-090

BExTS110 Telephone Initiated Alarm Horn

115/230Vac 50/60HZ.

Max output: 117dB(A) @ 1m

- 108dB(A) @ 10ft/3m

32 alarm tones with 3 stages/channels

181.0mm x 262.6mm (7.13" x 10.34")



BEx PA Loudspeakers

Zone 1, 2, 21 & 22



BExL15



BExL25



BExH120-R



BExH120

There are four versions of each PA loudspeaker, 8 ohm or 16 ohm and 70V or 100V Line transformer.

On 70V and 100V line transformer units there are multiple tapings for each version of loudspeaker. The BExL25D unit produces output levels in the 117dB(A) range and the BExL15D unit produces output levels in the 112dB(A) range.

Range Info:

Material

Corrosion proof, marine grade copper free LM6 aluminum, chromate and powder coat finish.

Ingress Protection

IP66/67

Fixings

Stainless steel.

Mounting

Ratchet adjustable stainless steel 'U' bracket.

Cable entries

Dual M20 ISO. One stopping plug included.

Approvals:

II 2G Ex d IIC T4
II 2D Ex tD A21

ATEX, IECEx, INMETRO, EAC Ex

PA Loudspeakers

Ref: 1-22-120

BExL15 PA Loudspeakers 15W

70 or 100V or 8 or 16 Ohm low impedance
Rated SPL 113dB +/-3dB @ 15W @ 1m
181.0mm x 275.0mm (7.13mm x 10.83")

Ref: 1-22-130

BExL25 PA Loudspeakers 25W

70 or 100V or 8 or 16 Ohm low impedance
Rated SPL 119dB +/-3dB @ 15W @ 1m
220.0mm x 326.0mm (8.66" x 12.83")

BEx Specialist Audible Products

Zone 1, 2, 21, 22

The BEx specialist audible products authentically reproduce the traditional sounds of electro-mechanical devices whilst providing a significantly higher level of performance and reliability.

The digitally stored recordings are output via a class D amplifier achieving sound levels exceeding the performance of the original mechanical devices whilst offering a continuously rated signal. The Belltronic model with its radial horn design not only physically emulates the traditional bell it also replicates the distribution of the audible signal.

Range Info:

Material

Corrosion proof, marine grade copper free LM6 aluminum, chromate and powder coat finish.

Ingress Protection

IP66/67

Fixings

Stainless steel.

Mounting

Ratchet adjustable stainless steel 'U' bracket.

Cable entries

Dual M20 ISO. One stopping plug included.

Approvals:

II 2G Ex d IIC T4
II 2D Ex tD A21

ATEX, IECEx, INMETRO, EAC Ex

'Belltronic' Alarm Sounders/Horns

Ref: 1-22-080

BExH120-R 'Belltronic' Ex Bell

24/48Vdc & 115/230Vac 50/60Hz.
Max output: 106dB(A) @ 1m
- 97dB(A) @ 10ft/3m
Digitally stored mechanical bell sound.
154.1mm x 194.0mm (6.07" x 7.64")

'Hootronic' Alarm Sounders/Horns

Ref: 1-22-070

BExH120 'Hootronic' Alarm Horn

24/48Vdc & 115/230Vac 50/60Hz.
Max output: 117.5dB(A) @ 1m
- 108.5dB(A) @ 10ft/3m
5 digitally stored electro-mechanical horn, siren & bell alternatives.
220.0mm x 313.0mm (8.66" x 12.32")



D1x Combination Alarm Horn Sounder & Xenon Strobe

Class I/II Div 1, Class, IECEx, ATEX Zone 1, Zone 20



D1xC1X05R
D1xC1X10R



D1xC1X05F
D1xC1X10F



D1xC1X05R
D1xC1X10R



D1xC2X05F
D1xC2X10F

The D1x combined signals - audible and visual warning from one device.

The Xenon strobe beacons are combined with alarm horn sounders either employing a traditional flare horn design, or the compact radial horn design which distributes sound omni-directionally and enables the beacon to be oriented optimally in any direction.

Strobe versions include 5 or 10 Joules with candela outputs of up to 1,000,000cd. Available in seven colours with a UV stable PC, field replaceable, filter. The flare version alarm horn sounders are available in sound pressure levels of up to 117 and 125dB(A).

The D1x combined signals in 24Vdc operating voltage are approved for audible public mode and visual private mode fire alarm use.

A threaded flame path enable quick installation and simplifies maintenance inspection whilst the innovative internal arrangement maximizes wiring space. The ratchet adjustable mounting bracket allows the device to be positioned for maximum effectiveness.

Approvals:

Class I Division 1 Group ABCD
Class I Zone 1 IIC
D1xC1X05:
T5 Ta -40°C to +70°C
T6 Ta -40°C to +55°C
D1xC1X10, D1xC2X05, D1xC2X10:
T5 Ta -40°C to +55°C
T6 Ta -40°C to +50°C
UL, cULs, IECEx, ATEX

Class II Division 1 Group FG
Zone 20 IIIB
D1xC1X05, D1xC2X05:
T4 Ta -40°C to +55°C
T4A Ta -40°C to +40°C

UL, cULs, ULC, IECEx,
ATEX, PESO, CSFM

Range Info:

Enclosure Material

Corrosion proof, marine grade, copper free LM6 aluminum, chromated and powder coated.

Flare Material

ABS - UL94 V0 5VA FR

Enclosure & Flare colour

Red (RAL3000) or Grey (RAL7038)

Lens colour filters

Amber, Blue, Clear, Green, Magenta, Red & Yellow

Ingress Protection

Type 4, 4X, 13, 3R, IP66

Fixings

Stainless steel.

Mounting

Ratchet adjustable stainless steel 'U' bracket.

Cable entries

1 x 1/2" NPT
2 x M20 ISO (or adapted to 1/2" or 3/4" NPT)

Stopping plugs included (brass, nickel plated or stainless steel).

Combination Signals with Xenon Strobes

Ref: 1-23-060

D1xC1X05R

Radial Alarm Horn & 5 Joule Strobe

24Vdc & 115/230Vac 50/60HZ
Max output: 115dB(A) @ 1 metre
- 106dB(A) @ 10ft/3m
64 alarm tones with 4 stages/channels
5 Joule Xenon beacon
Effective intensity 250cd
Peak intensity 500,000cd
122.0mm x 339.0mm (4.80" x 13.33")

D1xC1X10R

Radial Alarm Horn & 10 Joule Strobe

24Vdc & 115/230Vac 50/60HZ
Max output: 115dB(A) @ 1 metre
- 106dB(A) @ 10ft/3m
64 alarm tones with 4 stages/channels
10 Joule Xenon beacon
Effective intensity 500cd
Peak intensity 1,000,000cd
122.0mm x 339.0mm (4.80" x 13.33")

Ref: 1-23-050

D1xC1X05F

Flare Alarm Horn & 5 Joule Strobe

24Vdc & 115/230Vac 50/60HZ
Max output: 117dB(A) @ 1 metre
- 108dB(A) @ 10ft/3m
64 alarm tones with 4 stages/channels
5 Joule Xenon beacon
Effective intensity 250cd
Peak intensity 500,000cd
181.0mm x 408.0mm (7.13" x 16.06")

D1xC1X10F

Flare Alarm Horn & 10 Joule Strobe

24Vdc & 115/230Vac 50/60HZ
Max output: 117dB(A) @ 1 metre
- 108dB(A) @ 10ft/3m
64 alarm tones with 4 stages/channels
10 Joule Xenon beacon
Effective intensity 500cd
Peak intensity 1,000,000cd
181.0mm x 408.0mm (7.13" x 16.06")

Ref: 1-23-070

D1xC2X05F

Flare Alarm Horn & 5 Joule Xenon

24Vdc & 115/230Vac 50/60HZ
Max output: 125dB(A) @ 1 metre
- 116dB(A) @ 10ft/3m
64 alarm tones with 4 stages/channels
5 Joule Xenon beacon
Effective intensity 250cd
Peak intensity 500,000cd
220.0mm x 458.0mm (8.66" x 18.04")

D1xC2X10F

Flare Alarm Horn & 10 Joule Xenon

24Vdc & 115/230Vac 50/60HZ
Max output: 125dB(A) @ 1 metre
- 116dB(A) @ 10ft/3m
64 alarm tones with 4 stages/channels
10 Joule Xenon beacon
Effective intensity 500cd
Peak intensity 1,000,000cd
220.0mm x 458.0mm (8.66" x 18.04")



BEx Combination Signals

Zone 1, 2, 21 & 22



BExCSA1



BExCSR-R



BExCSR1



BExCSR-R1

The BEx family of explosion proof combination warning signals are IEXEx and ATEX approved for all Zone 1, 2, 21 and 22 applications.

With both audible and visual signaling in one device offering independent or simultaneous operation the devices can provide a dual signal from one installation point saving on associated cabling, installation time and space.

The visual signals are available as either Xenon strobes or high output L.E.D. beacons which can be combined with an alarm horn sounder either employing a traditional flare horn design, or the more compact radial horn design which distributes sound omni-directionally and enables the beacon to be oriented optimally in any direction.

Range Info:

Material

Corrosion proof, marine grade copper free LM6 aluminum, chromated and powder coated.

Ingress Protection

Ex d IP67

Fixings

Stainless steel.

Mounting

Ratchet adjustable stainless steel 'U' bracket.

Cable entries

Dual M20 ISO. One stopping plug included.

Approvals:

II 2G Ex d IIB T4 - Zone 1 & 2
II 2G Ex d IIB T4, II 2D Ex tD A21
- Zone 1, 2, 21 & 22

ATEX, IECEx, EAC Ex

Combination Signals with Xenon Strobes

Ref: 1-23-010

BExCS110-05

Alarm Horn & Xenon Strobe

12/24/48Vdc & 115/230Vac 50/60HZ.

Max output: 117dB(A) @ 1 metre

- 108dB(A) @ 10ft/3m

32 alarm tones with 3 stages/channels

5 Joule Xenon beacon

Effective intensity 250cd

Amber, Blue, Clear, Green, Magenta,

Red & Yellow lenses

181.0mm x 365.0mm (7.13" x 14.37")

Ref: 1-23-020

BExCS110-05-R

Omnidirectional Horn & Strobe

12/24/48Vdc & 115/230Vac 50/60HZ.

Max output: 117dB(A) @ 1 metre

- 108dB(A) @ 10ft/3m

32 alarm tones with 3 stages/channels

5 Joule Xenon beacon

Effective intensity 250cd

Amber, Blue, Clear, Green, Magenta,

Red & Yellow lenses

165.0mm x 296.7mm (6.50" x 11.69")

Combination Signals with L.E.D Beacons

Ref: 1-23-030

BExCS110-L2

Combination Horn & L.E.D

10-50Vdc & 115/230Vac 50/60HZ.

Max output: 117dB(A) @ 1 metre

- 108dB(A) @ 10ft/3m

32 alarm tones with 3 stages/channels

Array of 32 high output L.E.D.s

Effective intensity 160cd

Amber, Blue, Clear, Green, Magenta,

Red & Yellow lenses

181.0mm x 365.0mm (7.13" x 14.37")

Ref: 1-23-040

BExCS110-L2-R

Omnidirectional Horn & L.E.D

10-50Vdc & 115/230Vac 50/60HZ.

Max output: 117dB(A) @ 1 metre

- 108dB(A) @ 10ft/3m

32 alarm tones with 3 stages/channels

Array of 4 high output L.E.D.s

Effective intensity 160cd

Amber, Blue, Clear, Green, Magenta,

Red & Yellow lenses

165.0mm x 296.7mm (6.50" x 11.69")



STEx Combination Signals

Zone 1, 2, 21 & 22



STExCS1X05R



STExCS1X05F



STExCS1X05R



STExJ2

The STExC1X05 is an explosion proof family of combined audible & visual signals. The robust IP66 corrosion proof 316L stainless steel enclosure ensures suitability for all Zone 1, 2, 21 & 22 hazardous location signaling applications.

Powerful 5 Joule Xenon beacons are combined with an alarm horn sounder either employing a traditional flare horn design, or the more compact radial horn design; distributing the sound omnidirectionally and enables the beacon to be oriented optimally in any direction. The beacon and alarm horn can be used individually or can be connected internally and powered from the same source - saving space, reducing cabling costs and installation time.

The alarm horn is capable of a sound pressure level of up to 115dB(A) and contains 64 internationally recognized alarm tone frequencies. Using either positive or negative line switching systems can be configured to remotely trigger 4 alarm stages/channels enabling a single device to signal more than one warning.

The Xenon beacon can be set to flash at 1Hz (60 fpm), 1.5Hz (90 fpm) or a Double Strike. The PC lens color filters are UV stable and are field replaceable.

The STExJ2 is an IECEx & ATEX approved explosion proof junction box featuring a threaded flame path and four cable entries.

Available with standard or DIN rail terminals the STExJ2 can be utilized for termination purposes or as an enclosure for devices up to 5W, 60Vdc/250Vac.

Range Info:

Material

316L stainless steel, chromated and powder coated.

Ingress Protection

IP66

Fixings

Stainless steel.

Mounting

Ratchet adjustable A4 316 stainless steel mounting 'U' bracket.

Cable entries

Triple M20 ISO. Two 316 stainless steel stopping plugs included. Available with 1/2"NPT, 3/4"NPT or M25 adaptors.

Approvals

II 2G Ex db IIC Gb
II 2D Ex tb IIIC Db

ATEX, IECEx, EAC Ex

Combination Signals with Xenon Strobes

Ref: 1-23-090

STExC1X05F

Alarm Horn & Xenon Strobe

12/24/48Vdc & 230Vac 50/60HZ.

Max output: 117dB(A) @ 1 metre

- 108dB(A) @ 10ft/3m

64 alarm tones with 4 stages/channels

5 Joule Xenon beacon

Effective intensity 250cd

Amber, Blue, Clear, Green, Magenta,

Red & Yellow lenses

II 2G Ex db IIC Gb T6 Ta -50° to +40°C

II 2G Ex db IIC Gb T5 Ta -50° to +55°C

II 2G Ex db IIC Gb T4 Ta -50° to +70°C

II 2D Ex tb IIIC Db T110°C Ta -50° to +70°C

181.0mm x 383.4mm (7.13" x 15.09")

Combination Signals with Xenon Strobes

Ref: 1-23-095

BExCS110-05D-R

Omnidirectional Horn & Strobe

12/24/48Vdc & 230Vac 50/60HZ.

Max output: 115dB(A) @ 1 metre

- 106dB(A) @ 10ft/3m

64 alarm tones with 4 stages/channels

5 Joule Xenon beacon

Effective intensity 250cd

Amber, Blue, Clear, Green, Magenta,

Red & Yellow lenses

II 2G Ex db IIC Gb T6 Ta -50° to +40°C

II 2G Ex db IIC Gb T5 Ta -50° to +55°C

II 2G Ex db IIC Gb T4 Ta -50° to +70°C

II 2D Ex tb IIIC Db T110°C Ta -50° to +70°C

136.0mm x 314.2mm (5.35" x 12.37")

Junction Box

Ref: 1-25-020

STExJ2 Junction Box

60Vdc max & 260Vac 50/60Hz max.

5W max power

II 2G Ex db IIC T6 Gb Ta. -50° to +65°C

II 2G Ex db IIC T5 Gb Ta. -50° to +70°C

II 2D Ex tb IIIC Db T80°C Ta -50°C to +70°C

150.7mm x 95.50mm (5.93" x 3.76")



D1x plated assemblies

Status light stack and alarm bars

Zone 1, 2, 21 & 22



The D1x range of audible and visual signals can be configured to create factory assembled configurations of status lights and alarm bars suitable for onshore and offshore applications.

Mounted onto a stainless steel backplate, E2S can offer up to 7 different components pre-wired to simplify and reduce installation costs.

Any product from the D1x range of visual signals can be combined to create a D1xP2 type stack providing status indication, through the use of D1xB2LD2 L.E.D beacons, or visual warning by using the D1xB2 Xenon strobe beacons in 5, 10, 15 or 21J.

For applications requiring an audible warning a the D1xC3 alarm bar stack assembly can include any of the D1xB2 type beacons with a D1xS type alarm horn sounder.

For complete audio-visual warning the D1xC4 combines the D1xB2 LED or Xenon strobe beacons with the D1xS alarm horn sounder. With a sound output up to 116dB(A), 64 alarm tone frequencies and 4 remotely selectable stages/channels, the alarm horn can provide safe signaling for multiple scenarios from one device. The signals are pre-wired to a Div 1/ Zone 1 junction box providing a single point of installation.

Range Info:

Material
Corrosion proof, marine grade, copper free LM6 aluminum, chromated and powder coated.

Ingress Protection
IP66

Fixings
Stainless steel.

Mounting
Surface mount.

Cable entries
Dual & triple M20 ISO. Stopping plug included.
M25, 1/2" NPT and 3/4" NPT available.

Approvals:

IECEX, ATEX, UL, cUL, ULC, PESO, INMETRO, CSFM



GNEx plated assemblies

Status light stack and alarm bars

Zone 1, 2, 21 & 22

The GNEx range of audible and visual signals can be configured to create factory assembled configurations of status lights and alarm bars suitable for onshore and offshore applications.

Mounted onto a stainless steel backplate, E2S can offer up to 7 different components pre-wired to simplify and reduce installation costs.

Any product from the GNEx range of visual signals can be combined to create a GNExP2 type stack providing status indication, through the use of GNExB2LD2 L.E.D beacons, or visual warning by using the GNExB2 Xenon strobe beacons in 10, 15 or 21J.

For applications requiring an audible warning a the GNExC2 alarm bar stack assembly can include any of the GNExB2 type beacons with any of the GNExS type alarm horn sounders.

The compact GNExP1 stack assembly utilises the up to 3 of the GNExB1X05 Xenon beacons and the GNExC1 alarm bar assembly incorporates up to 2 x GNExB1X05 with any of the GNExS type alarm horn sounders.

Range Info:

Material

Corrosion proof, glass-reinforced polyester.

Ingress Protection

IP66

Fixings

Stainless steel.

Mounting

Surface mount.

Cable entries

Dual & triple M20 ISO. Stopping plug included.
M25, 1/2" NPT and 3/4" NPT available.

Approvals:

IECEx, ATEX, Ex EAC, PESO, INMETRO



GNEx Explosion/Harmproof



STEx plated assemblies

Status light stack and alarm bars

Zone 1, 2, 21 & 22

The STEx range of audible and visual signals feature 316L stainless steel enclosures for the most arduous of environments. Components from the STEx range can be factory assembled to create configurations of status lights and alarm bars suitable for onshore and offshore applications.

Mounted onto a stainless steel backplate, E2S can offer up to 7 different components pre-wired to simplify and reduce installation costs.

Any product from the STEx range of visual signals can be combined to create a STExP2 type stack providing status indication, through the use of STExB2LD2 L.E.D beacons, or visual warning by using the STExB2 Xenon strobe beacons in 10, 15 or 21J.

For applications requiring an audible warning a the STExC2 alarm bar stack assembly can include any of the STExB2 type beacons with a STExS type alarm horn sounder.

Range Info:

Material
316L stainless steel, chromated and powder coated.

Ingress Protection
IP66

Fixings
Stainless steel.

Mounting
Surface mount.

Cable entries
Dual & triple M20 ISO. Stopping plug included.
M25, 1/2"NPT and 3/4" NPT available.

Approvals:

IECEX, ATEX, Ex EAC, PESO, INMETRO



BEx plated assemblies

Zone 1, 2, 21 & 22

The BEx range of beacons can be configured to create sets of status lights suitable for onshore and offshore applications.

Mounted onto a stainless steel backplate, E2S can offer up to 5 different components complete with the option of Exe Junction Box to simplify and reduce installation costs.

Any product from the BEx range of signals can be combined to provide status indication, through the use of BExBGL1 L.E.D beacons, or visual warning by using the BExBG 5, 10, 15 or 21J Xenon strobe beacons all of which can be combined with BExS audible signals.

Range Info:

Signal Material

Corrosion proof, marine grade copper free LM6 aluminum, chromated and powder coated.

Back Plate Material

Powder coated stainless steel 304 or 316.

Junction Box Material

GRP - glass reinforced polyester.

Ingress Protection

Ex d IP67, Ex de IP66

Fixings

Stainless steel.

Mounting

Multiple fixing positions via back plate.

Junction Box Cable Entries

4 x M20 ISO as standard - custom sizes and qty's available.



BEx Explosion/Flameproof



D2x Visual & Audible Signals

Class I/II Div 2, Class, IECEx, ATEX Zone 2/22 - Haz Loc.



D2xS1



D2xC1X05 / D2xC1X10



D2xC1X05 / D2xC1X10



D2xC2LD2 / D2xC2X05 / D2xC2X10

The D2x range provides high-performance signaling for hazardous and industrial locations in a compact enclosure. The alarm horn sounders and combination signals are globally certified by UL to: NEC Class I/II Div 2 and NEC & CEC Class I Zone 2/22, IECEx & ATEX Zone 2/22.

Designed for applications requiring compliant signals to UL464, UL1638 and UL1971 for general signaling, private and public mode fire alarm installations.

For complete audio-visual warning the D2xC2LD2 combines the D2xB1LD2 LED beacon with the D2xS1 alarm horn sounder. With a sound output up to 116dB(A), 64 alarm tone frequencies and 4 remotely selectable stages/channels, the alarm horn can provide safe signaling for multiple scenarios from one device. The integrated LED beacon can be linked internally to the alarm horn minimizing cabling and installation time.

The D2xC1X05 & D2xC1X10 are supervised, hazardous location, combination alarm horn and Xenon beacon signals. Both D2xC2 and D2xC1 models in 24Vdc versions are UL & cUL approved for audible public mode (UL464) and visual private mode fire alarm use (UL1638).

The D2xS1 is a supervised, hazardous location, alarm horn sounder featuring 64 alarm tones and 4 remotely activated stages/channels. The 24Vdc version is UL & cUL approved for audible (UL464) public mode fire alarm use. The audible output is automatically synchronized without the need for additional modules.

The marine grade aluminum enclosure with an ingress protection of IP66/Type 4, 4X is suitable for the harshest of environments. The range is approved for use in both gas & dust atmospheres.

Range info

Material

LM6 & A1-Si12 Marine Grade Aluminum

Ingress Protection

IP66, Type 4, 4X, 13

Fixings

Stainless steel.

Mounting

Beacon: Surface or 3/4" conduit pendant

Horn/Combination: Surface mount

Cable entries

Beacon: 2 x 1/2"NPT, 1 x 3/4"NPT and 2 x M20 ISO

Horn/Combination: 2 x M20 ISO or 2 x 1/2"NPT or 1 x 3/4"NPT

Enclosure color

RAL3000 Red, RAL7038 Grey.

Lens color

Amber, Blue, Clear, Green, Magenta, Red & Yellow

Approvals

Class I Div 2 Groups A, B, C, D
Class II Div 2 Groups E, F & G
Class III Div 1 & 2

Class I Zone 2 AEx nA IIC Gc
Class I Zone 22 AEx tc IIC Dc

Zone 2 II 3G Ex n IIC Gc
Zone 22 II 3D Ex tc IIC Dc
NEC, CEC, ATEX, IECEx

Alarm Sounders/Horns UL464

Ref: 1-32-025

D2xS1 Alarm Horn Sounder

12/24/48Vdc & 115/230Vac 50/60Hz.
Max 116dB(A) @ 1m - 107dB(A) @ 10ft/3m
64 alarm tones with 4 stages/channels
181.0mm x 273.1mm (7.13" x 10.75")

Combination Signals with LED UL464 & UL1638

Ref: 1-34-040

D2xC2LD2 Alarm Horn Sounder & LED Beacon

24Vdc - 16-33Vdc
412.5mA @ 24Vdc (60fpm)
2.1A for 10ms in-rush
Max 116dB(A) @ 1m - 107dB(A) @ 10ft/3m
64 alarm tones with 4 stages/channels
Peak candela 300,000cd
Effective candela 180cd (UL1638)
Modes: 60fpm 1Hz, 80fpm, 120fpm 2Hz
Double strike, Triple strike, Steady
Remotely activated 2nd stage/channel mode
181.0mm x 403.4mm (7.13" x 15.88")

Combination Signals with Xenon UL464 & UL1638

Ref: 1-34-070

D2xC2X05 Alarm Horn Sounder & Xenon Strobe Beacon

20-28Vdc 609mA @ 24Vdc
115/230Vac 50/60Hz.
Max 116dB(A) @ 1m - 107dB(A) @ 10ft/3m
64 alarm tones with 4 stages/channels
5 Joule Xenon beacon.
Peak candela 33,410cd
Effective candela 94.78cd
Amber, Blue, Clear, Green, Magenta, Red & Yellow lenses
181.0mm x 385.1mm (7.13" x 15.17")

Ref: 1-34-030

D2xC2X10 Alarm Horn Sounder & Xenon Strobe Beacon

20-28Vdc 922mA @ 24Vdc
115/230Vac 50/60Hz.
Max 116dB(A) @ 1m - 107dB(A) @ 10ft/3m
64 alarm tones with 4 stages/channels
10 Joule Xenon beacon.
Peak candela 101,784cd
Effective candela 288.8cd
181.0mm x 385.1mm (7.13" x 15.17")

Combination Signals with Xenon UL464 & UL1638

Ref: 1-34-020

D2xC1X05 Alarm Horn Sounder & Xenon Strobe Beacon

20-28Vdc 518mA @ 24Vdc
115/230Vac 50/60Hz.
Max 116dB(A) @ 1m - 107dB(A) @ 10ft/3m
64 alarm tones with 4 stages/channels
5 Joule Xenon beacon.
Peak candela 33,410cd
Effective candela 94.78cd
Amber, Blue, Clear, Green, Magenta, Red & Yellow lenses
181.0mm x 385.1mm (7.13" x 15.17")

Ref: 1-34-030

D2xC1X10 Alarm Horn Sounder & Xenon Strobe Beacon

20-28Vdc 823mA @ 24Vdc
115/230Vac 50/60Hz.
Max 116dB(A) @ 1m - 107dB(A) @ 10ft/3m
64 alarm tones with 4 stages/channels
10 Joule Xenon beacon.
Peak candela 101,784cd
Effective candela 288.8cd
181.0mm x 385.1mm (7.13" x 15.17")



D2x Visual & Audible Signals

Class I/II Div 2, Class, IECEx, ATEX Zone 2/22 - Haz Loc.



D2xB1LD2 / D2xB1X05 / D2xB1X10 / D2xB1LD3

The D2x range provides high-performance signaling for hazardous and industrial locations in a compact enclosure. The LED and Xenon strobe beacons are globally certified by UL to: NEC Class I/II Div 2 and NEC & CEC Class I Zone 2/22, IECEx & ATEX Zone 2/22.

Designed for applications requiring compliant signals to UL1971 and UL1638 for general signaling, private mode and public mode fire alarm installations.

The D2xB1LD3 is the brightest auto-synchronized LED beacon available for public and private fire alarm applications in hazardous location environments.

The D2xB1LD2 is a synchronized, supervised, hazardous location LED beacon signal. Industry leading low in-rush and minimal current consumption coupled with a LED life time of over 60,000 hours - the D2xB1LD2 represents the next generation of hazardous location signals.

The D2xB1X05 & X10 are supervised, hazardous location, Xenon strobe beacon signals. 24Vdc versions are UL & cUL approved for visual private mode fire alarm use (UL1638).

The D2xXH1 and XH2 are auto-synchronised Xenon strobe beacons approved to UL1971 for public mode fire alarm installations featuring a light output rating of up to 70.29 Candela.

The marine grade aluminum enclosure with an ingress protection of IP66/Type 4, 4X is suitable for the harshest of environments. The range is approved for use in both gas & dust atmospheres.

Range info

Material

LM6 & A1-Si12 Marine Grade Aluminum

Ingress Protection

IP66, Type 4, 4X, 13

Fixings

Stainless steel.

Mounting

Beacon: Surface or 3/4" conduit pendant

Horn/Combination: Surface mount

Cable entries

Beacon: 2 x 1/2"NPT, 1 x 3/4"NPT and 2 x M20 ISO

Horn/Combination: 2 x M20 ISO or 2 x 1/2"NPT or 1 x 3/4"NPT

Enclosure color

RAL3000 Red, RAL7038 Grey.

Lens color

Amber, Blue, Clear, Green, Magenta, Red & Yellow

Approvals

Class I Div 2 Groups A, B, C, D
Class II Div 2 Groups E, F & G
Class III Div 1 & 2

Class I Zone 2 AEx nA IIC Gc
Class I Zone 22 AEx tc IIC Dc

Zone 2 II 3G Ex n IIC Gc
Zone 22 II 3D Ex tc IIC Dc
NEC, CEC, ATEX, IECEx

Xenon Strobe Beacons UL1638

Ref: 1-31-040

D2xB1X05 Xenon Strobe

20-28Vdc 275mA @ 24Vdc
115/230Vac 50/60Hz.
5 Joule Xenon beacon.
Peak candela 33,410cd
Effective candela 94.78cd
130.3mm x 130.3mm (5.13" x 5.13")

Ref: 1-31-050

D2xB1X10 Xenon Strobe

20-28Vdc 560mA @ 24Vdc
115/230Vac 50/60Hz.
10 Joule Xenon beacon.
Peak candela 101,784cd
Effective candela 288.8cd
Flash rates:60fpm - 1Hz
130.3mm x 130.3mm (5.13" x 5.13")

LED Beacon UL1638

Ref: 1-31-060

D2xB1LD2 LED Beacon/Light

24Vdc - 16-33Vdc
99.5mA @ 24Vdc (60fpm)
1.88A for 2ms in-rush
Peak candela 300,000cd
Effective candela 180cd (UL1638)
Modes: 60fpm 1Hz, 80fpm, 120fpm 2Hz
Double strike, Triple strike, Steady
Remotely activated 2nd stage/channel mode
130.3mm x 130.3mm (5.13" x 5.13")

Combination Signals with Xenon UL464 & UL1638

Ref: 1-34-095

D2xC4 Alarm Horn Sounder & Xenon Strobe or LED Beacon combination

20-28Vdc 518mA @ 24Vdc
115/230Vac 50/60Hz.
Max 116dB(A) @ 1m - 107dB(A) @ 10ft/3m
64 alarm tones with 4 stages/channels
LED or 5 or 10 Joule Xenon beacon.
Amber, Blue, Clear, Green, Magenta, Red & Yellow lenses

All signals pre-wired to Div / Zone 2 junction box providing single installation point.
Choice of pole size mounting kits.



D2x Visual & Audible Signals

Class I/II Div 2, Class, IECEx, ATEX Zone 2/22 - Haz Loc.



The D2x range provides high-performance signaling for hazardous and industrial locations in a compact enclosure. The alarm horn sounders and combination signals are globally certified by UL to: NEC Class I/II Div 2 and NEC & CEC Class I Zone 2/22, IECEx & ATEX Zone 2/22.

Designed for applications requiring compliant signals to UL464 and UL1638 for general signaling and private mode fire alarm installations.

For complete audio-visual warning the D2xC4 combines the D2xB1LD2 LED or D2xB1X05 or X10 beacons with the D2xS1 alarm horn sounder. With a sound output up to 116dB(A), 64 alarm tone frequencies and 4 remotely selectable stages/channels, the alarm horn can provide safe signaling for multiple scenarios from one device. The LED or Xenon beacons are pre-wired to a Div 2/ Zone 2 junction box providing a single point of installation. A choice of pole size mounting kits are available.

For installations requiring a vertical stack of beacons with or without alarm horn and junction box, the D2xP1 and D2xC3 models can be configured to meet exact requirements and removes the need for any third party connectivity between the signals.

The D2xB1LD2 is a synchronized, supervised, hazardous location LED beacon signal. Industry leading low in-rush and minimal current consumption coupled with a LED life time of over 60,000 hours - the D2xB1LD2 represents the next generation of hazardous location signals.

The D2xB1X05 & X10 are supervised, hazardous location, Xenon strobe beacon signals. 24Vdc versions are UL & cUL approved for visual private mode fire alarm use (UL1638).

The D2xS1 is a supervised, hazardous location, alarm horn sounder featuring 64 alarm tones and 4 remotely activated stages/channels. The 24Vdc version is UL & cUL approved for audible (UL464) public mode fire alarm use. The audible output is automatically synchronized without the need for additional modules.

Range info

Material
LM6 & A1-Si12 Marine Grade Aluminum

Ingress Protection
IP66, Type 4, 4X, 13

Fixings
Stainless steel.

Cable entries
2 x 1/2" NPT or 2 x M20 ISO

Enclosure color
RAL3000 Red, RAL7038 Grey.

Lens color
Amber, Blue, Clear, Green, Magenta, Red & Yellow

Approvals

Class I Div 2 Groups A, B, C, D
Class II Div 2 Groups E, F & G
Class III Div 1 & 2

Class I Zone 2 AEx nA IIC Gc
Class I Zone 22 AEx tc IIC Dc

Zone 2 II 3G Ex n IIC Gc
Zone 22 II 3D Ex tc IIC Dc
NEC, CEC, ATEX, IECEx

Alarm Bar Stack

D2xC3 Combination Signal
Xenon or LED beacons with optional junction box
UL1638

Factory assembled stack of between 2 and 6 D2xB1 type LED or 5 or 10 Joule Xenon beacons with D2xS1 type alarm horn sounder.
Amber, Blue, Clear, Green, Magenta, Red & Yellow lenses
All signals pre-wired. Optional Div / Zone 2 junction box providing single installation point.

Status Light Stack

D2xP1 Combination Signal
Xenon or LED beacons with optional junction box
UL1638

Factory assembled stack of between 2 and 7 D2xB1 type LED or 5 or 10 Joule Xenon beacons.
Amber, Blue, Clear, Green, Magenta, Red & Yellow lenses
All signals pre-wired. Optional Div / Zone 2 junction box providing single installation point.

Alarm Bar

D2xC4 Combination Signal
Alarm Horn Sounder with dual Xenon or LED beacons
UL464 & UL1638

D2xS1 alarm horn sounder Max 116dB(A) @ 1m - 107dB(A) @ 10ft/3m 64 alarm tones with 4 stages/channels
Dual D2xB1 type LED or 5 or 10 Joule Xenon beacon. Amber, Blue, Clear, Green, Magenta, Red & Yellow lenses
All signals pre-wired to Div / Zone 2 junction box providing single installation point. Choice of pole size mounting kits.



E2x Visual & Audible Signals

Class I/II Div 2, IECEx, ATEX Zone 2/22 - Haz Loc.



E2xB05/E2xB10/E2xBL2



E2xS1F/E2xL1F



E2xS1F/E2xL2F



E2xC1X05F/E2xC1LD2F



E2xC1X05R/E2xC1LD2R

E2x range provides high-performance and cost effective signaling for hazardous environments. The family is UL/cULs approved for Class I Div 2 and Class II Div 2 as well as IECEx and ATEX certified Zone 2, 22 applications.

The E2xBL2 LED status light & beacon utilizes an array of high power Cree® LED's, orientated to optimize visibility in any direction. The beacon can be configured as a steady beacon for status indicator use, with a light output of up to 87 candela. Alternatively one of the five flashing modes, with a light output of up to 160 candela, may be used for warning applications. DC voltage versions feature three remotely selectable stages enabling multiple warnings to be signaled from one device. Also available are the E2xB05 5 and E2xB10 10Joule Xenon strobe beacons. The UV stable color filter enhances the light output and is field replaceable.

Audible signaling in the E2x family is supplied by the E2xS1 and E2xS2 alarm horn sounders. Featuring 45 alarm tones and three remotely selectable stages/channels with a sound level output up to 121dB(A).

The E2x combination signals contain a 114dB(A) alarm sounder with either a 5 Joule Xenon strobe beacon (E2xC1X05) or a high output multi-function LED beacon providing a complete audio-visual signaling solution whilst reducing the installation time and costs associated with multiple unit installations

The E2x products have corrosion proof, light-weight PPS enclosures and impact resistant ABS flares with a stainless steel adjustable U bracket for ease of mounting. Dual cable entries and duplicate terminations reduce the need for junction boxes in multiple unit installations.

Range info

Material

Corrosion proof, light-weight PPS.

Ingress Protection

IP67, Type 4, 4X, 13

Fixings

Stainless steel.

Mounting

Ratchet adjustable stainless steel 'U' bracket.

Cable entries

M20 ISO or 1/2" NPT

Enclosure color

Black

Lens color

Amber, Blue, Clear, Green, Magenta, Red & Yellow

Approvals

Class I, Div 2, Grps A,B,C,D
Class I, Div 2, Grps A,B,C,D
Class II, Div 2, Grps F & G
Class III, Div 1

Zone 2 II 3G Ex n IIC Gc
Zone 22 II 3D Ex tc IIC Dc

ATEX, IECEx, NEC, CEC

Xenon Strobe & LED Beacons

Ref: 1-31-030

E2xBL2 LED Multifunction Beacon

24Vdc (18-54Vdc) & 115/230Vac 50/60Hz.

Effective intensity 160cd - 1Hz flash

Modes: 60fpm 1Hz, 80fpm, 120fpm 2Hz

Double strike, Triple strike, Steady

Remotely activated 2nd stage/channel mode

166.0mm x 233.0mm (6.54" x 9.17")

Ref: 1-31-010

E2xB05 Xenon Strobe 5 Joules

12/24Vdc/Vdc & 115/230Vac 50/60Hz.

Effective intensity 250cd

Amber, Blue, Clear, Green, Red & Yellow lenses

166.0mm x 233.0mm (6.54" x 9.17")

Ref: 1-31-020

E2xB10 Xenon Strobe Beacon 10 Joule

12/24/48Vdc & 115/230Vac 50/60Hz.

Effective intensity 500cd

Amber, Blue, Clear, Green, Red & Yellow lenses

166.0mm x 233.0mm (6.54" x 9.17")

Combination Signal

Ref: 1-33-010

E2xC1X05F/R Alarm Horn & Xenon Beacon

24/48Vdc & 115/230Vac 50/60Hz.

Max 116dB(A) @ 1m - 107dB(A) @ 10ft/3m

45 alarm tones with 3 stages/channels

5 Joule Xenon beacon.

Effective intensity 250cd

F: 181.0mm x 385.1mm (7.13" x 15.17")

R: 122.0mm x 315.9mm (4.80" x 12.44")

Ref: 1-33-010

E2xC1LD2F/R Alarm Horn & LED Beacon

24Vdc (18-54Vdc) & 115/230Vac 50/60Hz.

Effective intensity 160cd - 1Hz flash

Modes: 60fpm 1Hz, 80fpm, 120fpm 2Hz

Double strike, Triple strike, Steady

Remotely activated 2nd stage/channel mode

Max 116dB(A) @ 1m - 107dB(A) @ 10ft/3m

45 alarm tones with 3 stages/channels

F: 181.0mm x 385.1mm (7.13" x 15.17")

R: 122.0mm x 315.9mm (4.80" x 12.44")

Alarm Sounders/Horns

Ref: 1-32-010

E2xS1 Alarm Horn Sounder

12/24/48Vdc & 115/230Vac 50/60Hz.

Max 116dB(A) @ 1m - 107dB(A) @ 10ft/3m

45 alarm tones with 3 stages/channels

181.0mm x 273.1mm (7.13" x 10.75")

Ref: 1-32-020

E2xS2 Alarm Horn Sounder

12/24/48Vdc & 115/230Vac 50/60Hz.

Max 121dB(A) @ 1m - 112dB(A) @ 10ft/3m

45 alarm tones with 3 stages/channels

220.0mm x 323.5mm (8.66" x 12.74")

PA Loudspeakers

Ref: 1-32-030

E2xL1 PA Loudspeaker 15W

70V or 100V or 8 or 16 Ohm low impedance

Rated SPL 118dB +/-3dB @ 15W @ 1m

181.0mm x 273.1mm (7.13" x 10.75")

Ref: 1-32-040

E2xL2 PA Loudspeaker 25W

70V or 100V or 8 or 16 Ohm low impedance

Rated SPL 124dB +/-3dB @ 25W @ 1m

220.0mm x 323.5mm (8.66" x 12.74")



IS-mini Range

Class I Div 1, Zone 0, 1 & 2 - Haz Loc.



IS-mA1



IS-mB1



IS-mC1

The compact IS mini-range offers a complete audible and visual signaling solution for Zone 0 applications.

The IS-mA1M minialarm is also suitable for group I mining use. The devices can be operated from a single Zener barrier or galvanic isolator. The sounders feature 49 alarm tones that can be selected by an internal switch, each one can be remotely changed to a second or third stage alarm sound. The beacon section can be set internally for a flash rate of either 1Hz or 2Hz. The combined unit sounder and beacon can be operated simultaneously from one barrier or from separate barriers if independent operation is required.

Range info

Material & Color
UL94V0 & 5VA FR ABS & PC, RAL 3000 Red

Ingress Protection
IP65

Fixings
Stainless steel.

Mounting
Surface mount.

Cable entries
2 x M20 clearance gland knockouts.

Approvals

II 1G Ex ia IIC T4 Ga - Zone 0, 1 & 2
IS Class I, Div 1, Groups A, B, C, D T4
IS Class I, Zone 0, AEx ia IIC T4
IS-mA1M:
I M1 Ex ia I Ma (Mining)

ATEX, IECEx, FM

L.E.D Warning Signal

Ref: 1-11-010
IS-mB1 IS-minialite L.E.D Beacon
16-28Vdc via Zener barrier or galvanic isolator
Array of 6 high intensity L.E.D.s.
Effective intensity 23cd
Double flash at 1Hz and 2Hz
Red, Amber, Blue, Green & Clear lenses
Diameter: 88.7mm Length: 85.0mm
Diameter: 3.49" Length: 3.35"

Alarm Sounder/Horn

Ref: 1-12-010
IS-mA1 IS-minialarm
16-28vdc via Zener barrier or galvanic isolator
100dB(A) @ 1m - 91dB(A) @ 10ft/3m
49 alarm tones with 3 stages/channels
Diameter: 88.7mm Length: 99.0mm
Diameter: 3.49" Length: 3.90"

Combination Signal

Ref: 1-13-010
IS-mC1 IS-minialert
16-28Vdc via Zener barrier or galvanic isolator
100dB(A) @ 1m - 91dB(A) @ 10ft/3m
49 alarm tones with 3 stages/channels
Array of 6 high intensity L.E.D.s.
Effective intensity 23cd
Double flash at 1Hz and 2Hz
Red, Amber, Blue, Green & Clear lenses
Diameter: 88.7mm Length: 116.0mm
Diameter: 3.49" Length: 4.57"



IS Audible & Visual Signals

Class I Div 1, Zone 0, 1 & 2 - Haz Loc.



IS-L101L



IS-A105N



IS-A105N/IS-L101L



IS-D105



IS-DL105L

The IS-A105N & IS-L101L range devices can be operated utilizing a common zener barrier or galvanic isolator. Certified for use in applications requiring Ex ia or Class I Div 1 equipment these products are a globally accepted solution for fire or process control signaling.

When installed as a combination audio-visual signal the alarm accept function can be employed. By closing a pair of external contacts (i.e a push switch) the operator may silence the alarm for set periods between 5 seconds and 2 hours. If after the preset time the alarm condition still exists the sounder will activate again.

IS-D105 and IS-DL105L: intrinsically safe audible & visual signals with metal enclosures.

The marine grade aluminum enclosures are chromated and powder coated for durability in the harshest of environments. The IS-DL105 also features an alarm accept function where the alarm can be silenced for set periods by the operator. The alarm horn sounder will reactivate if the fault is not cleared within the set time.

Range info

Supply

16-28vdc via Zener barrier or galvanic isolator.

Material

UL94V0 & 5VA FR ABS & PC

Ingress Protection

IP66

Fixings

Stainless steel.

Mounting

Surface mount

Cable entries

L.E.D. Beacon: 1 x M20 clearance gland knockouts.

Sounder/Combination devices: 2 x M20 clearance gland knockouts.

Approvals

II 1G Ex ia IIC T4 Ga - Zone 0, 1 & 2
IS Class I, Div 1, Groups A, B, C, D T4
IS Class I, Zone 0, AEx ia IIC T4

ATEX, IECEx, FM

L.E.D Beacon

Ref: 1-11-020

IS-L101L L.E.D Beacon

Array of 6 high intensity L.E.D.s.
Effective intensity 48cd
2Hz (2 double flashes per second).
Red, Amber, Blue & Green L.E.D's
86.0mm x 86.0mm x 93.0mm
3.39" x 3.39" x 3.66"

Alarm Sounder/Horn

Ref: 1-12-020

IS-A105N Alarm Sounder

105dB(A) @ 1m - 96dB(A) @ 10ft/3m
49 alarm tones with 3 stages/channels
130.0mm x 130.0mm x 133.5mm
5.12" x 5.12" x 5.26"

Combination Signal

Ref: 1-13-020

IS-A105N/IS-L101L Intrinsically Safe Alarm Sounder & L.E.D beacon

105dB(A) @ 1m - 96dB(A) @ 10ft/3m
49 alarm tones with 3 stages/channels
Array of 6 high intensity L.E.D.s.
Effective intensity 48cd
Red, Amber, Blue & Green L.E.D's
130.0mm x 216.2mm x 133.5mm
5.12" x 5.2" x 8.52"

Range info

Supply

16-28vdc via Zener barrier or galvanic isolator.

Material

A1-Si12 Marine Grade Aluminum.

Ingress Protection

IP66

Fixings

Stainless steel.

Mounting

Surface mount

Cable entries

2 x M20 clearance gland knockouts.

Approvals

II 1G Ex ia IIC T4 Ga - Zone 0, 1 & 2
IS Class I, Div 1, Groups A, B, C, D T4
IS Class I, Zone 0, AEx ia IIC T4

Alarm Sounder/Horn

Ref: 1-12-030

IS-D105 Alarm Sounder

105dB(A) @ 1m - 96dB(A) @ 10ft/3m
49 alarm tones with 3 stages/channels
Enclosure: RAL3000 Red or RAL7038 Grey
130.0mm x 180.0mm x 125.0mm
5.12" x 7.09" x 4.93"

Combination Signal

Ref: 1-13-030

IS-DL105L Intrinsically Safe Alarm Sounder & L.E.D beacon

105dB(A) @ 1m - 96dB(A) @ 10ft/3m
49 alarm tones with 3 stages/channels
Array of 6 high intensity L.E.D.s.
Effective intensity 48cd
Red, Amber, Blue & Green L.E.D's
Enclosure: RAL3000 Red or RAL7038 Grey
130.0mm x 267.5mm x 125.0mm
5.12" x 10.54" x 4.93"



IS Call Points

Zone 0, 1 & 2 - Haz Loc.



IS-CP4A-BG/IS-CP4B-BG



IS-CP4A-PB/IS-CP4B-PB

IS Panel Mount Indicators

Class I Div 1, Zone 0, 1 & 2 - Haz Loc.



IS-CP4A-PT/IS-CP4B-PT



IS-pB1/IS-pA1



IS-pA1

The IS call points offer a solution for Zones 0, 1, 2, 21 & 22 requiring intrinsically safe equipment for the control of fire and gas alarm systems.

Available with and without monitoring resistors the break glass, push button and tool reset versions are certified to ATEX and IECEx standards. The back box can be rotated to give one M20 side entry and dual M20 entries either on the top or bottom.

The IS panel mount indicators and buzzer provide signaling solutions for operator notification from control panels and instrument clusters.

With high ingress protection levels and standard cut out sizes the IS buzzer and L.E.D indicator offer quick installation.

Range info

Material

Corrosion proof, marine grade, copper free LM6 (A413) aluminum.

Ingress Protection

IP66

Fixings

Stainless steel.

Cable entries

2 x M20 top/bottom and 1 x M20 left/right. Back box can be rotated to give 2 x bottom and 1 x side entries.

Stopping Plugs

2 x Ex e nylon plugs as standard. Brass and stainless steel plugs optional.

Approvals

II 1G Ex ia IIC T6 Ga, II 2D Ex t IIIC T60°C Db
II 1G Ex ia IIC T4 Ga, II 2D Ex t IIIC T70°C Db

ATEX, IECEx, EAC Ex

Break Glass Call Point

Ref: 1-14-010

IS-CP4A-BG/IS-CP4B-BG Break Glass Call Point

95.0mm x 98.0mm x 76.0mm
3.74" x 3.86" x 2.99"

Push Button Call Point

Ref: 1-14-020

IS-CP4A-PB/IS-CP4B-PB Push Button Call Point

95.0mm x 98.0mm x 76.0mm
3.74" x 3.86" x 2.99"

Tool Reset Call Point

Ref: 1-14-030

IS-CP4A-PT/IS-CP4B-PT Tool Reset Call Point

95.0mm x 98.0mm x 76.0mm
3.74" x 3.86" x 2.99"

Panel Mount Indicator

Material

Housing: Nylon 6. Lens: Polycarbonate.

Ingress Protection

Front IP66 - Rear IP20.
Optional IP65 rear sealing assembly available.

Mounting

Panel mount - 22.5mm

Terminals

Screw clamp for 1.5mm²

Ref: 1-11-030

IS-pB1 Panel Mount Indicator

14-30Vdc via barrier or isolator.
Typical Output: Red 190 lux, Amber 150 lux,
Green 250 lux, Blue 150 lux & White 300 lux
Diameter: 30.0mm x Length: 57.0mm
Diameter: 1.18" x Length: 2.24"

Panel Mount Buzzer

Material

UL94V0 & 5VA FR ABS. RAL7038 Grey.

Ingress Protection

IP66.

Mounting

Panel mount - 28.5mm

Terminals

Spade terminals

Ref: 1-12-040

IS-pA1 Panel Mount Sounder

16-28Vdc via Zener barrier or galvanic isolator
Max output: 89.6dB(A) @ 1m
- 80.6dB(A) @ 10ft/3m
Diameter: 43.0mm x Length: 36.0mm
Diameter: 1.69" x Length: 1.42"

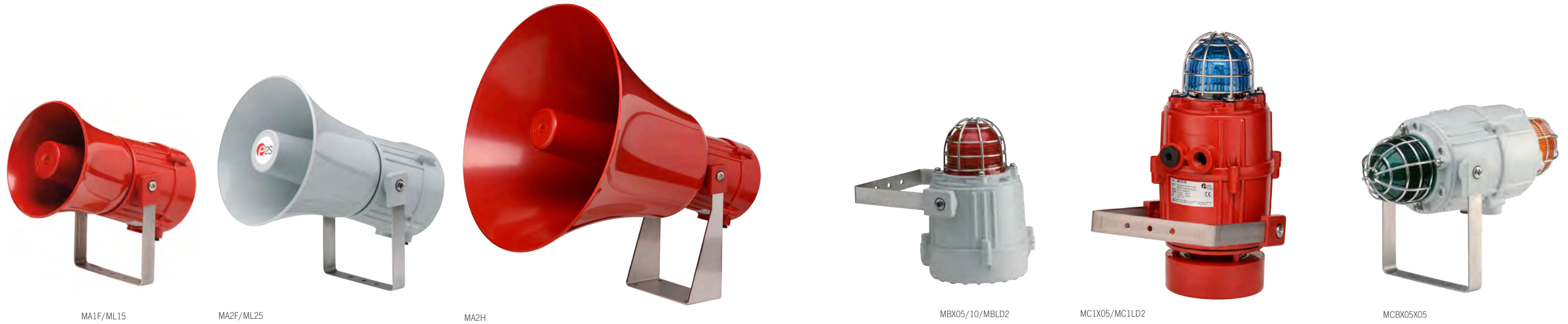


Weatherproof & Marine Ordinary Locations



M Visual & Audible Signals

Heavy industrial & marine



MA1F/ML15

MA2F/ML25

MA2H

MBX05/10/MBLD2

MC1X05/MC1LD2

MCBX05X05

The 'M' series of products have been designed to withstand the harshest of environments. Constructed from lightweight, impact and fire resistant ABS, the range features stainless steel, ratchet adjustable mounting brackets and has been third party tested to IP66/67.

The alarm horn sounders have 45 alarm tone frequencies and 3 alarm stages/channels that can be remotely selected. Xenon strobe beacons and multi-function L.E.D. lights are available as standalone devices or combined with an alarm horn sounder. All models have large termination areas and dual M20 cable entries. The MBX21 version features a 21J Xenon strobe beacon in a PPS enclosure suitable for extreme conditions.

The ML15 and ML25 PA loudspeakers (70V models) are UL & cUL approved for Fire Alarm & Emergency and Professional & Commercial use for the US and Canada.

Range info

Material

High impact UL94 V0 & 5VA FR ABS

Ingress Protection

IP66/67.

Fixings

Stainless steel.

Mounting

Ratchet adjustable stainless steel 'U' bracket.

Cable entries

2 x M20 supplied with 1 blanking plug.
2 x 1/2"NPT with 1 blanking plug
1 x M20 & 1 x 1/2"NPT

MBX21 Xenon Strobe

Material

Corrosion proof, light-weight PPS.

Ingress Protection

IP66/67.

Fixings

Stainless steel.

Mounting

Ratchet adjustable stainless steel 'U' bracket.

Cable entries

2 x M20 supplied with 1 blanking plug.
2 x 1/2"NPT with 1 blanking plug
1 x M20 & 1 x 1/2"NPT

Xenon Strobe Beacons

Ref: 2-13-070

MBX05 Xenon Strobe Beacon

12/24/48Vdc & 115/230Vac 50/60Hz.
5 Joule Xenon beacon.
Effective intensity 250cd
Amber, Blue, Clear, Green, Red & Yellow lenses
170.6mm x 233.0mm (6.72" x 9.17")

Ref: 2-13-080

MBX10 Xenon Strobe Beacon

12/24/48Vdc & 115/230Vac 50/60Hz.
10 Joule Xenon beacon.
Effective intensity 500cd
Amber, Blue, Clear, Green, Red & Yellow lenses
170.6mm x 233.0mm (6.72" x 9.17")

L.E.D. Beacon

Ref: 2-14-060

MBLD2 Multi-function L.E.D Beacon

24/115/230Vac 50/60Hz.
Array of 4 high output L.E.D.s.
Effective intensity 160cd
Amber, Blue, Green, Red & Yellow lenses
170.6mm x 233.0mm (6.72" x 9.17")

Dual Xenon Strobe Beacon

Ref: 2-13-090

MCBX05X05 Dual Xenon Strobe Beacon

12/24/48Vdc & 115/230Vac 50/60Hz.
5 Joule Xenon beacons.
Effective intensity 250cd x 2
Amber, Blue, Clear, Green, Red & Yellow lenses
170.6mm x 344.9mm (6.72" x 13.58")

Alarm Sounders/Horns

Ref: 2-21-190

MA1F Alarm Horn Sounder

24Vdc (10-30Vdc), 48Vdc (35-60Vdc) & 24Vac, 115Vac, 230Vac 50/60Hz
Max 117dB(A) @ 1m - 108dB(A) @ 10ft/3m
64 alarm tones with 4 stages/channels
181.0mm x 273.1mm (7.13" x 10.75")

Ref: 2-21-200

MA2F Alarm Horn Sounder

24Vdc (10-30Vdc), 48Vdc (35-60Vdc) & 24Vac, 115Vac, 230Vac 50/60Hz
Max 123dB(A) @ 1m - 114dB(A) @ 10ft/3m
64 alarm tones with 4 stages/channels
220.0mm x 323.5mm (8.66" x 12.74")

Ref: 2-21-200

MA2H Alarm Horn Sounder

24Vdc (10-30Vdc), 48Vdc (35-60Vdc) & 24Vac, 115Vac, 230Vac 50/60Hz
Max 129dB(A) @ 1m - 120dB(A) @ 10ft/3m
64 alarm tones with 4 stages/channels
403.0mm x 353mm (15.87" x 17.847")

Combination Signals with Xenon or L.E.D Beacon

Ref: 2-31-400

MC1X05 Alarm Horn & Xenon Strobe

24Vdc (10-30Vdc), 48Vdc (35-60Vdc) & 24Vac, 115Vac, 230Vac 50/60Hz
Max 117dB(A) @ 1m - 108dB(A) @ 10ft/3m
5 Joule Xenon beacon.
Effective intensity 250cd
Amber, Blue, Clear, Green, Red & Yellow lenses
181.0mm x 385.1mm (7.13" x 15.17")

Ref: 2-31-410

MC1LD2 Alarm Horn & L.E.D

24Vdc (10-30Vdc), 48Vdc (35-60Vdc) & 24Vac, 115Vac, 230Vac 50/60Hz
Max 117dB(A) @ 1m - 108dB(A) @ 10ft/3m
Array of 32 high output L.E.D.s.
Effective intensity 160cd.
Amber, Blue, Clear (white L.E.D.s) Green, Red & Yellow lenses
181.0mm x 385.1mm (7.13" x 15.17")

PA Loudspeakers

Ref: 2-24-010

ML15 PA Horn Loudspeaker

70V or 100V or 8 or 16 Ohm low impedance
Rated SPL 118dB +/-3dB @ 15W @ 1m
181.0mm x 273.1mm (7.13" x 10.75")

Ref: 2-24-020

ML25 PA Horn Loudspeaker

70V or 100V or 8 or 16 Ohm low impedance
Rated SPL 121dB +/-3dB @ 25W @ 1m
220.0mm x 323.5mm (8.66" x 12.74")

MB021 Xenon Strobe

Ref: 2-13-110

MBX21 Xenon Strobe Beacon 21 Joule

24/48Vdc & 115/230Vac 50/60Hz.
21 Joule Xenon beacon.
Effective intensity 1,050cd
Amber, Blue, Clear, Green, Red & Yellow lenses
170.6mm x 233.0mm (6.72" x 9.17")



AlertAlarm

General purpose audible signals



GPH1/2/3/4



A100/A100SONTEL



D105/D112



A105N/A105NSONTEL



A112N



A121

The AlertAlarm range contains high performance industrial alarm horn sounders with a choice of enclosure materials and form factors to suit any environment and application.

The range is CPR compliant (EN54-3) for use in fire systems within the EU and is also UL approved for fire and general signaling duties. Globally approved, with EAC, DNV and MED certification on specific products within the range, AlertAlarm is the ideal solution for fire, security, process control and industrial signaling. For harsh conditions the D105 and D112 marine grade, aluminum enclosure alarm horn sounders provide a robust solution for on and offshore safe area applications.

The GPH range is a UL approved general purpose signal in a lightweight, robust PC enclosure.

The three alarm tones include a simulated electro-mechanical buzzer sound, traditionally only available from heavy, unreliable mechanical devices, plus two further warning tones. Suitable for 4" back box mounting the range includes surface mount and flush mount versions.

Range info

Material

A100/A105N/A112/A121: High impact UL94 V0 & 5VA FR ABS Enclosure
D105/D112: Marine grade aluminum A1 Si12 Cu enclosure

Ingress Protection

IP66, Type 4/4X/13/3R

Fixings

Stainless steel.

Mounting

Surface mount - via external mounting lugs or internal BESA compatible fixing positions.

Cable entries

2 or 3 x M20 or 20mm clearance entries.

Features

Automatic synchronization on multi-sounder systems.

Continuously rated.

Duplicate cable terminations (in & out for daisy-chain installations).

Available with custom tone configurations and frequencies.

Alarm Sounders/Horns

Ref: 2-21-040

A100 Alarm Sounder

24Vdc (10-60Vdc) & 230Vac (60-260dc & 24-260ac) 50/60Hz
Max output 110dB(A) @ 1m
- 101dB(A) @ 10ft/3m
64 alarm tones with 4 stages/channels
RAL3000 Red, RAL7038 Grey, White enclosure
86.0mm x 86.0mm x 85mm
3.39" x 3.39" x 3.35"

Also available in telephone initiated A100SONTEL version Ref: 2-21-050.

Powered direct from telephone line (REN 1).
Max output 104B(A) @ 1m
- 91dB(A) @ 10ft/3m

Ref: 2-21-060

A105N Alarm Sounder

24Vdc (10-60Vdc) & 230Vac (60-260dc & 24-260ac) 50/60Hz
Max output 113dB(A) @ 1m
- 104dB(A) @ 10ft/3m
64 alarm tones with 4 stages/channels
RAL3000 Red, RAL7038 Grey enclosure
130.0mm x 130.0mm x 133.5mm
(5.12" x 5.12" x 5.26")

Also available in telephone initiated A105NSONTEL version Ref: 2-21-070.
Powered direct from telephone line (REN 1).
Max output 105B(A) @ 1m
- 96dB(A) @ 10ft/3m

Alarm Sounder/Horn

Ref: 2-21-080

A112N Alarm Sounder

24Vdc (11.5-54Vdc), 230Vac (100-240Vac) 50/60Hz
120dB(A) @ 1m - 111dB(A) @ 10ft/3m
64 alarm tones with 4 stages/channels
RAL3000 Red, RAL7038 Grey enclosure
168.0mm x 168.0mm x 156.5mm
6.62" x 6.62" x 6.16"

Ref: 2-21-090

A121 Alarm Sounder

24Vdc (11.5-54Vdc), 230Vac (100-240Vac) 50/60Hz
126dB(A) @ 1m - 117dB(A) @ 10ft/3m
64 alarm tones with 4 stages/channels
RAL3000 Red, RAL7038 Grey enclosure
190.0mm x 190.0mm x 191.5mm 7.48" x 7.48" x 7.54"

GPH Buzzers

Ref: 2-21-120

GPH1 & GPH2 Alarm Horn - Buzzer

24Vdc (10-30Vdc) & 115/230Vac 50/60Hz
105dB(A) @ 1m - 96dB(A) @ 10ft/3m
3 buzzer/sounder tones
152.0mm 152.0mm x 29.8mm
with optional back box 65.5mm
5.98" x 5.98" x 1.17"
with optional back box

Metal Bodied Rugged Sounders

Ref: 2-21-100

D105 Alarm Sounder

24Vdc (10-60Vdc) & 230Vac (60-260dc & 24-260ac) 50/60Hz
112dB(A) @ 1m - 103dB(A) @ 10ft/3m
64 alarm tones with 4 stages/channels
RAL3000 Red, RAL7038 Grey enclosure
130.0mm x 180.0mm x 112.0mm 5.12" x 7.09" x 4.93"

Ref: 2-21-110

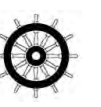
D112 Alarm Sounder

24Vdc (10-30Vdc), 48Vdc (35-60Vdc) & 24Vac, 115Vac, 230Vac 50/60Hz
119dB(A) @ 1m - 110dB(A) @ 10ft/3m
45 alarm tones with 3 stages/channels
Red RAL3000, Grey RAL7038 enclosure
130.0mm x 180.0mm x 112.0mm 5.12" x 7.09" x 4.93"

Ref: 2-21-130

GPH3 & GPH4 Alarm Horn - Buzzer

10-30Vdc & 40-260Vac 50/60Hz
110dB(A) @ 1m - 101dB(A) @ 10ft/3m
3 buzzer/sounder tones
152.0mm 152.0mm x 29.8mm
with optional back box 65.5mm
5.98" x 5.98" x 1.17"
with optional back box 2.58"



AlertAlight

General purpose audible and visual signals



L101X/L101H/
L101FLASHTEL



AL100X/AL100H/
AL100SONTELFLASH



DL105X/DL105H/
DL112X/DL112H



AL105NX/
AL105NSONTELFLASH



AL112NX/
AL112NH



AL121X/AL121H

The AlertAlight range contains high performance industrial alarm horn sounders combined with Xenon strobe beacons or high output L.E.D. beacons. A choice of enclosure materials and form factors are available to suit any environment and application.

The range is CPR compliant (EN54-3 & EN54-23) for use in fire systems within the EU and is also UL and cULs approved for fire and general signaling duties. Globally approved, the AlertAlight range is the ideal solution for fire, security, process control and industrial signaling. For harsh conditions the DL105 and DL112 marine grade, aluminum enclosure alarm horn combinations provide a robust solution for on and offshore safe area applications.

The AL105N, AL112N and AL121 units are also MED compliant and DNV type approved.

Features

Automatic synchronization on multi-sounder system.

Continuously rated.

Unit can be mounted using external lugs or internal BESA compatible fixing positions.

Duplicate cable terminations (in & out for daisy-chain installations).

Tropicalization available on request.

Available with custom tone configurations and frequencies

Xenon Strobe Beacons

Ref: 2-13-010

L101X Xenon Beacon

12/24/48Vdc & 24/115/230Vac 50/60Hz. Effective intensity 250cd

Amber, Blue, Clear, Green, Magenta, Red & Yellow lenses

Red RAL3000, Grey RAL7038, white enclosure
Max. 86.4mm x 86.4mm x 92.7mm
Max. 3.40" x 3.40" x 3.65"

Also available in telephone initiated L101X-FLASHTEL version Ref: 2-13-020.

L.E.D. Beacon

Ref: 2-14-010

L101H L.E.D. Beacon

10-14 / 16-33Vdc, 48-260Vac/dc 50/60Hz. Array of 18 high output CREE LED's.

Effective intensity 180cd

Amber, Blue, Clear, Green, Magenta, Red & Yellow lenses

Red RAL3000, Grey RAL7038, white enclosure
Max. 86.4mm x 86.4mm x 92.7mm
Max. 3.40" x 3.40" x 3.65"

AL100 Combination signals

Max. 110dB(A) @ 1m - 101dB(A) @ 10ft/3m

64 alarm tones with 4 stages/channels Red RAL3000, Grey RAL7038, white enclosure

Max. 86.6mm x 172.0mm x 84.6mm

Max. 3.41" x 6.77" x 3.33"

Ref: 2-31-090

AL100X Alarm sounder & Xenon strobe
24Vdc (10-30Vdc), 48Vdc (35-60Vdc), 24Vac, 115Vac, 230Vac 50/60Hz.

Xenon strobe 5 Joule.
Effective intensity 250cd.

Ref: 2-31-100

AL100H Alarm sounder & L.E.D beacon

24Vdc (16-33Vdc), 48Vdc (48-60Vdc), 115Vac, 230Vac 50/60Hz.

Array of 18 high output CREE LED's.
Effective intensity 180cd

AL105N Combination Signals

Max. 113dB(A) @ 1m - 104dB(A) @ 10ft/3m

64 alarm tones with 4 stages/channels Red RAL3000, Grey RAL7038, white enclosure

Max. 130.0mm x 216.2mm x 133.5mm

Max. 5.12" x 8.52" x 5.26"

Ref: 2-31-120

AL105NX Alarm sounder & Xenon strobe
24Vdc (10-30Vdc), 48Vdc (35-60Vdc), 24Vac, 115Vac, 230Vac 50/60Hz.

Xenon strobe 5 Joule.

Effective intensity 250cd

Ref: 2-31-130

AL105NH Alarm sounder & L.E.D beacon
24Vdc (16-33Vdc), 48Vdc (48-60Vdc), 115Vac, 230Vac 50/60Hz.

Array of 18 high output CREE LED's.

Effective intensity 180cd

Ref: 2-31-360

DL105X Alarm sounder & Xenon beacon
24Vdc (10-30Vdc), 48Vdc (35-60Vdc), 24Vac, 115Vac, 230Vac 50/60Hz.

Xenon strobe 5 Joule.

Effective intensity 250cd

Ref: 2-31-370

DL105H Alarm sounder & L.E.D beacon
24Vdc (16-33Vdc), 48Vdc (48-60Vdc), 115Vac, 230Vac 50/60Hz.

Array of 18 high output CREE LED's.

Effective intensity 180cd

AL112N Combination signals

Max. 120dB(A) @ 1m - 111dB(A) @ 10ft/3m

64 alarm tones with 4 stages/channels Red RAL3000 or Grey RAL7038 enclosure

Max. 168.0mm x 255.0mm x 156.5mm

Max. 6.6" x 10.0" x 6.2"

Ref: 2-31-180

AL112NX Alarm Sounder & Xenon strobe
24Vdc (10-30Vdc), 48Vdc (35-60Vdc), 24Vac, 115Vac, 230Vac 50/60Hz.

Xenon strobe 5 Joule.

Effective intensity 250cd

Ref: 2-31-190

AL112NH Alarm sounder & L.E.D beacon
24Vdc (16-33Vdc), 48Vdc (48-54Vdc), 115Vac, 230Vac 50/60Hz.

Array of 18 high output CREE LED's.

Effective intensity 180cd

Ref: 2-31-380

DL112X Alarm Sounder & Xenon strobe
24Vdc (10-30Vdc), 48Vdc (35-60Vdc), 24Vac, 115Vac, 230Vac 50/60Hz.

Xenon strobe 5 Joule.

Effective intensity 250cd

Ref: 2-31-390

DL112H Alarm sounder & L.E.D beacon
24Vdc (16-30Vdc), 48Vdc (3-60Vdc), 115Vac, 230Vac 50/60Hz.

Array of 18 high output CREE LED's.

Effective intensity 180cd

AL121 Combination signals

Max. 126dB(A) @ 1m - 117dB(A) @ 10ft/3m

64 alarm tones with 4 stages/channels Red RAL3000 or Grey RAL7038 enclosure

Max. 190.0mm x 275.9mm x 191.5mm

7.5" x 10.9" x 7.5"

Ref: 2-31-230

AL121X Alarm sounder & Xenon strobe
24Vdc (10-30Vdc), 48Vdc (35-60Vdc), 24Vac, 115Vac, 230Vac 50/60Hz.

Xenon strobe 5 Joule.

Effective intensity 250cd.

Ref: 2-31-240

AL121H Alarm sounder & L.E.D beacon
24Vdc (16-33Vdc), 48Vdc (48-54Vdc), 115Vac, 230Vac 50/60Hz.

Array of 18 high output CREE LED's.

Effective intensity 180cd

Ref: 2-31-110

Ref: 2-31-140.

Telephone initiated signals

A100SONTELFLASH Ref: 2-31-110.

A105NXSONTELFLASH Ref: 2-31-140.



Sonora

Compact audible and visual signals



SONF1/SONF1-HO



SON2



SONFL1X/SONFL1X-H/
SONFL1H/SONFL1H-H



SON4/SON4L/SON4B



BEDHEAD

Sonora range offers compact audio visual signaling for fire, industrial, process control and machine safety applications.

The range features low current consumption combined with high performance. The SONF1 is available with two levels of sound level output and is CPR compliant (tested to EN54-3) for fire alarm use.

The SONF1 and SONF1-HO can be combined with either a Xenon strobe beacon or L.E.D beacon to create the SONFL1X or SONFL1H. Key audible products from the Sonora range are UL and cULs listed for general signaling and outdoor use in addition to VdS and EAC approval.

The SONF1 is EN54-3 tested and the SONFL1X and SONFL1X-H are EN54-3 & EN54-23 tested for CPR compliance (CPR 305/2011/EU).

Range info

Material

High impact UL94 V0 & 5VA FR ABS Enclosure

Ingress Protection

IP66, UL version Type 13 & 3R

Fixings

Stainless steel.

Mounting

Surface mount - via external mounting lugs (where applicable) or internal BESA compatible fixing positions.

Cable entries

2 or 3 or 4 x 20mm clearance gland entries.

Enclosure colors

Red RAL3000, Grey RAL7038 or white.

Alarm Sounders/Horns

Ref: 2-21-010

SONF1 Alarm Sounder

24Vdc (10-30Vdc) & 24Vac, 115Vac

& 230Vac 50/60Hz

Max. 100dB(A) @ 1m - 91dB(A) @ 10ft/3m

10 alarm tones with 2 stages/channels

86.0mm x 86.0mm x 54.2mm

3.39" x 3.39" x 2.13"

Ref: 2-21-020

SONF1-HO High Output Alarm Sounder

12Vdc, 24Vdc

Max. 105dB(A) @ 1m - 96dB(A) @ 10ft/3m

10 alarm tones with 2 stages/channels

86.0mm x 86.0mm x 85mm

3.39" x 3.39" x 3.35"

Ref: 2-21-030

SON2 Alarm Sounder

24Vdc (10-30Vdc) & 24Vac, 115Vac, 230Vac
50/60Hz

Max. 105dB(A) @ 1m - 96dB(A) @ 10ft/3m

32 alarm tones with 3 stages/channels

86.0mm x 86.0mm x 85mm

3.39" x 3.39" x 3.35"

BEDHEAD alarm sounder

Ref: 2-21-230

BEDHEAD Alarm Sounder

24Vdc

Max. 90dB(A) @ 1m - 81dB(A) @ 10ft/3m

10 alarm tones with 3 stages/channels

White enclosure

85.5mm x 85.5mm x 11.0mm cover depth

3.37" x 3.37" x 0.43" cover depth

Combination Signals

SONFL1 Type Combination Signals

Max. 100dB(A) @ 1m - 91dB(A) @ 10ft/3m

10 alarm tones with 2 stages/channels

86.6mm x 172.0mm x 84.0mm

3.41" x 6.77" x 3.31"

Ref: 2-31-050

SONFL1X Xenon strobe

12Vdc, 24Vdc & 24Vac, 115Vac, 230Vac

5 Joule

Effective intensity 200cd

Amber, Blue, Clear, Green, Magenta, Red
& Yellow lenses

Ref: 2-31-050

SONFL1H Xenon strobe

10-30Vdc, 115Vac, 230Vac

Array of 18 high output CREE LED's.

Effective intensity 180cd

Amber, Blue, Clear, Green, Magenta,
Red & Yellow

SONFL1-HO Type Combination Signals

Max. 105dB(A) @ 1m - 96dB(A) @ 10ft/3m

10 alarm tones with 2 stages/channels

86.6mm x 172.0mm x 84.0mm

3.41" x 6.77" x 3.31"

Ref: 2-31-070

SONFL1X-H High Output Horn & Xenon

12Vdc, 24Vdc

10 alarm tones with 2 stages/channels

Xenon strobe 5 Joule.

Effective intensity 200cd.

Amber, Blue, Clear, Green, Magenta, Red
& Yellow lenses

Ref: 2-31-050

SONFL1H-H High Output Horn & L.E.D

12Vdc, 24Vdc

Array of 18 high output CREE LED's.

Effective intensity 180cd

Amber, Blue, Clear, Green, Magenta, Red
& Yellow

Integrated Combination Signals

Ref: 2-31-040

SON4 Alarm Sounder & Xenon Beacon

24Vdc (18-30Vdc) & 24Vac, 115Vac, 230Vac

Max. 104dB(A) @ 1m - 95dB(A) @ 10ft/3m

32 alarm tones with 3 stages/channels

Xenon strobe 0.5 Joule.

Effective intensity 25cd.

Amber, Blue & Red lenses

86.0mm x 86.0mm x 102.0mm

3.39" x 3.39" 4.02"

Ref: 2-31-030

SON4L Alarm Sounder & L.E.D Beacon

12Vdc, 24Vdc, 48Vdc & 24Vac, 115Vac,

230Vac

Max. 100dB(A) @ 1m - 99dB(A) @ 10ft/3m

10 alarm tones with 3 stages/channels

Array of 5 high intensity L.E.D.s.

Effective intensity 3cd.

Amber & Red lenses

86.0mm x 86.0mm x 76.9(dc), 102.0mm(ac)

3.39" x 3.39" 3.03" (dc) 4.02" (ac)

Ref: 2-31-020

SON4B Alarm Sounder & Filament Lamp Beacon

24Vdc & 24Vac, 115Vac, 230Vac

Max. 100dB(A) @ 1m - 99dB(A) @ 10ft/3m

10 alarm tones with 3 stages/channels

1.3W Filament bulb/lamp.

Effective intensity 6cd.

Amber, Blue & Red lenses

86.0mm x 86.0mm x 76.9(dc), 102.0mm(ac)

3.39" x 3.39" 3.03" (dc) 4.02" (ac)



Sonora

Signal towers



STB2



STB3



STA2



STA3



STB4



STA4

The STA and STB stack signal towers are customizable audio-visual signals featuring a tower of 2, 3 or 4 AlertAlight L101X or L101H type beacons optionally combined with a SONF1 alarm sounder.

Each beacon position can contain either a Xenon or high output L.E.D. light source. The STA and STB assemblies feature a pre-wired junction box and cable loom simplifying installation and enabling the end user to determine beacon type and position during installation.

The STA and STB range are UL and cULs listed for general signaling and EAC certified.

Range info

Material

High impact UL94 V0 & 5VA FR ABS
Enclosure: Red RAL3000, Grey RAL7038 or white

Ingress Protection

IP66, UL version Type 13 & 3R

Fixings

Stainless steel.

Mounting

Surface mount - via external mounting lugs (where applicable) or internal BESA compatible fixing positions.

Cable entries

2 or 3 or 4 x 20mm clearance gland entries.

Enclosure colors

Red RAL3000, Grey RAL7038 or white.

Visual Signal Tower

Visual signal stack units with Xenon or L.E.D. Beacons. Pre-wired junction box and cable loom.

12Vdc, 24Vdc & 115Vac, 230Vac
Xenon effective intensity 200cd.
L.E.D. effective intensity 180cd.

Lens colours: Amber, Blue, Clear, Green, Magenta, Red, Yellow

Ref: 2-11-010

STB2 Xenon &/or L.E.D x 2

86.4mm x 262.5mm x 83.7mm
3.4" x 10.34" x 3.3"

Ref: 2-11-011

STB3 Xenon &/or L.E.D x 3

86.4mm x 351.5mm x 83.7mm
3.4" x 13.85" x 3.3"

Ref: 2-11-012

STB4 Xenon &/or L.E.D x 4

86.4mm x 438.5mm x 83.7mm
3.4" x 17.28" x 3.3"

Audible & Visual Signal Tower

Visual and audible stack units with Xenon or L.E.D. Beacons. Pre-wired junction box and cable loom.

12Vdc, 24Vdc & 115Vac, 230Vac
Max. 100dB(A) @ 1m - 99dB(A) @ 10ft/3m 10 alarm tones with 3 stages/channels Xenon effective intensity 200cd.

L.E.D. effective intensity 180cd.
Lens colours: Amber, Blue, Clear, Green, Magenta, Red, Yellow

Ref: 2-31-010

STA2 Alarm Horn w. Xenon &/or L.E.D x 2

86.4mm x 350.5mm x 83.7mm
3.4" x 13.81" x 3.3"

Ref: 2-31-011

STA3 Alarm Horn w. Xenon &/or L.E.D x 3

86.4mm x 439.5mm x 83.7mm
3.4" x 17.32" x 3.3"

Ref: 2-31-012

STA4 Alarm Horn w. Xenon &/or L.E.D x 4

86.4mm x 527.8mm x 83.7mm
3.4" x 20.79" x 3.3"



Appello X user recordable

Alarm horn sounders



A105NAX



D105AX



A121



MV121

The Appello range is the next generation user recordable annunciators capable of storing up to 2 minutes of content.

The Appello X range records, stores and plays back recorded content with unsurpassed clarity and stores sounds directly to non-volatile memory. The recordable devices enables any type of content such as voice, music or custom tones and messages to be recorded via built in microphone or line-in audio input. Additionally, factory programming for customer supplied content is also available. The range is UL & cULs approved for general signaling and is also EAC certified.

Range info

Material

A105, A121 & MV121 devices: UL94V0 & 5VA FR ABS
D105AX: Marine grade aluminum A1 Si12 Cu

Ingress Protection

IP66, Type 4, 4X, 13

Fixings

Stainless steel.

Mounting

A105NAX/A121AX: Surface mount - via external mounting lugs or internal BESA compatible fixing positions.
MV121: Ratchet adjustable stainless steel 'U' bracket.

Cable entries

2 x M20 or 20mm clearance entries.

Features

Direct content storage on non-volatile memory. CD quality reproduction.
Message length: 4 x 30 seconds
Easy message creation with built in microphone or line-in audio input.
Volume controls for user content and alarm tones.
Available with custom tone configurations and frequencies.
Factory programming of user supplied content also available.
UL approved for general signaling use.

Alarm Horn Sounder

Ref: 2-22-010

A105NAX Appello X Recordable Horn
24Vdc (10-30Vdc) & 90-260Vac 50/60Hz
RAL3000 Red, RAL7038 Grey or White housing.
Max output alarm tone: 110dB(A) @ 1m - 101dB(A) @ 10ft/3m
Max output user recorded content: 102dB(A) @ 1m - 93dB(A) @ 10ft/3m
45 alarm tones with 3 stages/channels
DC: 130.0mm x 130.0mm x 133.5mm
AC: 130.0mm x 132.0mm x 188.0mm
DC: 5.12" x 5.12" x 5.26"
AC: 5.12" x 5.2" x 7.4"

Ref: 2-22-030

D105AX Appello X Recordable Horn
24Vdc (10-30Vdc)
RAL3000 Red or RAL7038 Grey housing.
Max output alarm tone: 110dB(A) @ 1m - 101dB(A) @ 10ft/3m
Max output user recorded content: 102dB(A) @ 1m - 93dB(A) @ 10ft/3m
45 alarm tones with 3 stages/channels
130.0mm x 180.0mm x 115.0mm
5.12" x 7.09" x 4.93"

Alarm Horn Sounder

Ref: 2-22-020

A121AX Appello X Recordable Horn
24Vdc (14-30Vdc) & 90-260Vac 50/60Hz
RAL3000 Red or RAL7038 Grey housing.
Max output alarm tone: 126dB(A) @ 1m - 117dB(A) @ 10ft/3m
Max output user recorded content: 111dB(A) @ 1m - 102dB(A) @ 10ft/3m
45 alarm tones with 3 stages/channels
190.0mm x 190.0mm x 191.5mm
7.48" x 7.48" x 7.54"

Ref: 2-22-040

MV121 Appello X Recordable Horn
24Vdc (10-30Vdc) & 90-260Vac 50/60Hz
RAL7038 Grey housing.
Max output alarm tone: 126dB(A) @ 1m - 117dB(A) @ 10ft/3m
Max output user recorded content: 111dB(A) @ 1m - 102dB(A) @ 10ft/3m
45 alarm tones with 3 stages/channels
220.0mm x 323.5mm (8.66" x 12.74")



Appello X user recordable

Combination alarm horn sounders



AL105NAXX/AL105NAXH



DL105AXX/DL105AXH



AL121AXX/AL121AXH

The Appello range is the next generation user recordable annunciators capable of storing up to 2 minutes of content.

The Appello X range records, stores and plays back recorded content with unsurpassed clarity and stores sounds directly to non-volatile memory. The recordable devices enables any type of content such as voice, music or custom tones and messages to be recorded via built in microphone or line-in audio input. Additionally, factory programming for supplied content is also available.

The combination versions of the Appello X range provide additional visual signaling to enforce the warning provided by the alarm horn. A variety of enclosure types and sizes are available to suit any application. The range is UL & cULs approved for general signaling and is also EAC certified.

Range info

Material

AL105 devices: UL94V0 & 5VA FR ABS
DL105 devices: Marine grade aluminum A1 Si12 Cu

Ingress Protection

IP66, Type 4, 4X, 13

Fixings

Stainless steel.

Mounting

Surface mount - via external mounting lugs or internal BESA compatible fixing positions.

Cable entries

2 x M20 or 20mm clearance entries.

Features

Direct content storage on non-volatile memory. CD quality reproduction.
Message length: 4 x 30 seconds
Easy message creation with built in microphone or line-in audio input.
Volume controls for user content and alarm tones.
Available with custom tone configurations and frequencies.
Factory programming of user supplied content also available.
UL approved for general signaling use.

Combination Signal with Xenon Beacon

Ref: 2-32-010

AL105NAXX Appello X Recordable Sounder & Xenon Beacon

12Vdc, 24Vdc & 115Vac, 230Vac 50/60Hz.

Max output alarm tone: 110dB(A) @ 1m - 101dB(A) @ 10ft/3m

Max output user recorded content: 102dB(A) @ 1m - 93dB(A) @ 10ft/3m

45 alarm tones with 3 stages/channels
5 Joule Xenon beacon.

Effective intensity 200cd

Amber, Blue, Clear, Green, Red & Yellow lenses

RAL3000 Red, RAL7038 Grey or White housing.

DC: 130.0mm x 130.0mm x 216.2mm AC: 130.0mm x 133.5mm x 275.4mm

DC: 5.12" x 5.12" x 8.52"

AC: 5.12" x 5.2" x 10.85"

Combination Signal with L.E.D. Beacon

Ref: 2-32-020

AL105NAXH Appello X Recordable Sounder & L.E.D Beacon

10-30Vdc & 90-260Vac 50/60Hz

Max output alarm tone: 110dB(A) @ 1m - 101dB(A) @ 10ft/3m

Max output user recorded content: 102dB(A) @ 1m - 93dB(A) @ 10ft/3m

45 alarm tones with 3 stages/channels
Array of 24 high output L.E.D.s.

Effective intensity 120cd

Amber, Blue, White, Green and Red L.E.D's
RAL3000 Red, RAL7038 Grey or White housing.

DC: 130.0mm x 130.0mm x 216.2mm

AC: 130.0mm x 133.5mm x 275.4mm

DC: 5.12" x 5.12" x 8.52"

AC: 5.12" x 5.2" x 10.85"

Combination Signal with Xenon Beacon

Ref: 2-32-030

DL105AXX Appello X Recordable Sounder & Xenon Beacon

10-30Vdc

Max output alarm tone: 110dB(A) @ 1m - 101dB(A) @ 10ft/3m

Max output user recorded content: 102dB(A) @ 1m - 93dB(A) @ 10ft/3m

45 alarm tones with 3 stages/channels
5 Joule Xenon beacon.

Effective intensity 200cd

Amber, Blue, Clear, Green, Magenta, Red & Yellow lenses

RAL3000 Red or RAL7038 Grey housing.

130.0mm x 267.4mm x 125.0mm

5.12" x 4.93" x 10.54"

Combination Signal with L.E.D. Beacon

Ref: 2-32-040

DL105AXH Appello X Recordable Sounder & L.E.D Beacon

10-30Vdc

Max output alarm tone: 110dB(A) @ 1m - 101dB(A) @ 10ft/3m

Max output user recorded content: 102dB(A) @ 1m - 93dB(A) @ 10ft/3m

45 alarm tones with 3 stages/channels
Array of 24 high output L.E.D.s.

Effective intensity 120cd

Amber, Blue, White, Green and Red L.E.D's
RAL3000 Red or RAL7038 Grey housing.

130.0mm x 267.4mm x 125.0mm

5.12" x 4.93" x 10.54"

Combination Signal with Xenon Beacon

Ref: 2-32-050

AL121AXX Appello X Recordable Sounder & Xenon Beacon

24Vdc & 115Vac, 230Vac 50/60Hz.

Max output alarm tone: 126dB(A) @ 1m - 117dB(A) @ 10ft/3m

Max output user recorded content: 111dB(A) @ 1m - 102dB(A) @ 10ft/3m

45 alarm tones with 3 stages/channels
5 Joule Xenon beacon.

Effective intensity 200cd

Amber, Blue, Clear, Green, Red & Yellow lenses

RAL3000 Red or RAL7038 Grey housing.

190.0mm x 275.9mm x 191.5mm

7.5" x 10.9mm x 7.54"

Combination Signal with L.E.D. Beacon

Ref: 2-32-060

AL121AXH Appello X Recordable Sounder & L.E.D Beacon

10-30Vdc & 90-260Vac 50/60Hz

Max output alarm tone: 126dB(A) @ 1m - 117dB(A) @ 10ft/3m

Max output user recorded content: 111dB(A) @ 1m - 102dB(A) @ 10ft/3m

45 alarm tones with 3 stages/channels
Array of 24 high output L.E.D.s.

Effective intensity 120cd

Amber, Blue, White, Green and Red lenses
RAL3000 Red or RAL7038 Grey housing.

190.0mm x 275.9mm x 191.5mm

7.5" x 10.9mm x 7.54"



SpectrAlarm

Combination audible & visual signals



AB105STR/
AB105LDA/
AB105RTH



AB112STR/
AB112LDA/
AB112RTH



AB121STR/
AB121LDA/
AB121RTH

The SpectrAlarm range combines the AlertAlarm audible devices with the Spectra beacons to create a series of products optimized for industrial signaling applications.

The alarm horn sounders and beacons can be connected separately to allow the audible and visual signal to warn on individual events. Alternatively a common power source can be used to simplify installation and reduce cabling.

With sound levels up to 126dB(A) and combined with a 15 Joule Xenon strobe beacon the AB121STR Spectralarm combination device provides clear audible and visual warning where the highest levels of ambient noise and light exist.

Range info

Material

High impact UL94 V0 & 5VA FR ABS
UV stable PC UL94 V0 FR

Ingress Protection

IP65

Fixings

Stainless steel.

Mounting

Surface mount - via external mounting lugs or internal BESA compatible fixing positions.

Enclosure colors

Red (RAL3000) or grey (RAL7038)

Lens colors

Amber, Blue, Clear, Green, Magenta,
Red & Yellow

Cable Entries

2 x 20mm clearance entries

Features

Automatic synchronization on multi-sounder system.
Continuously rated.
Duplicate cable terminations (in & out for daisy-chain installations).
Tropicalization available on request.
Available with custom tone configurations and frequencies.

AB105 Combination signal

Max. 112dB(A) @ 1m - 103dB(A) @ 10ft/3m
64 alarm tones with 3 stages/channels
144.0mm x 273.9mm x 133.5mm
5.67" x 10.78" x 5.25"

Ref: 2-31-160

AB105STR Alarm sounder & Xenon strobe

12Vdc, 24Vdc, 48Vdc
24Vac, 115Vac & 230Vac
Xenon strobe 5 Joule.
Effective intensity 250cd.
1Hz flash rate automatically synchronized.
DC units: Optionally 1.5Hz & double strike

Ref: 2-31-170

AB105RTH Alarm Sounder & rotating beacon

12Vdc, 24Vdc & 115Vac, 230Vac
Halogen Bulb G6,35/GY6,35, 25W.
Effective intensity 125cd.

Ref: 2-31-170

AB105LDA Alarm sounder & L.E.D beacon

24Vdc (10-30Vdc), 48Vdc (35-60Vdc) & 115Vac, 230Vac
Array of 16 high power L.E.D.s.
Effective intensity 19cd.

AB112 Combination signal

Max. 119dB(A) @ 1m - 110dB(A) @ 10ft/3m
64 alarm tones with 3 stages/channels
169.0mm x 312.8mm x 156.5mm
6.65" x 12.31" x 6.16"

Ref: 2-31-210

AB112STR Alarm sounder & Xenon strobe

12Vdc, 24Vdc, 48Vdc
24Vac, 115Vac & 230Vac
Xenon strobe 5 Joule.
Effective intensity 250cd.
1Hz flash rate automatically synchronized.
DC units: Optionally 1.5Hz & double strike

Ref: 2-31-200

AB112RTH Alarm Sounder & rotating beacon

12Vdc, 24Vdc & 115Vac, 230Vac
Halogen Bulb G6,35/GY6,35, 25W.
Effective intensity 125cd

Ref: 2-31-220

AB112LDA Alarm sounder & L.E.D beacon

24Vdc (10-30Vdc), 48Vdc (35-60Vdc) & 115Vac, 230Vac
Array of 16 high power L.E.D.s.
Effective intensity 19cd.

AB121 Combination signal

Max. 126dB(A) @ 1m - 117dB(A) @ 10ft/3m
64 alarm tones with 3 stages/channels
210.0mm x 388.5mm x 191.5mm
8.26" x 15.29" x 7.65"

Ref: 2-31-260

AB121STR Alarm sounder & Xenon strobe

24Vdc, 48Vdc
115Vac, 230Vac
Xenon strobe 15 Joule.
Effective intensity 250cd.
1Hz flash rate automatically synchronized.
DC units: Optionally 1.5Hz & double strike

Ref: 2-31-250

AB121RTH Alarm sounder & rotating beacon

12Vdc, 24Vdc & 115Vac, 230Vac
Halogen Bulb G6,35/GY6,35, 40W.
Effective intensity 324cd.

Ref: 2-31-270

AB121LDA Alarm sounder & L.E.D beacon

24Vdc (10-30Vdc), 48Vdc (35-60Vdc) & 115Vac, 230Vac
Array of 32 high power L.E.D.s.
Effective intensity 30cd.

Spectra

Audible and combination signaling horns & buzzers



H100B



H100T



H110T



H100BX/H100BL



H100TX/H100TL/H100TF



H110TX/H110TL/H110TR

The Spectra horns, buzzers and combination devices are ideal for industrial environments requiring signaling for process control and machine safety.

The H100 and H110 devices feature a very high output electronic signal capable of generating a traditional 'buzzer' warning tone traditionally associated with electro-mechanical signals as well as a further two alarm tone frequencies. Also available combined with visual signals.

Range info

Material

High impact ABS (UL94V0 & 5VA)

Ingress Protection

IP65

Fixings

Stainless steel.

Mounting

Surface mount.

Enclosure color

Grey RAL7038 housing.

Cable Entries

1 x 5-7mm push through grommet

Alarm horn sounders

Ref: 2-21-170

H100B Signaling Horn

12-30Vdc/Vac, 40-260Vdc/Vac 50/60Hz
Max. 100dB(A) @ 1m - 91dB(A) @ 10ft/3m
3 buzzer/alarm tones

Grey RAL7038.

94.2mm x 71.5mm (3.71" x 2.82")

Ref: 2-21-160

H100T Signaling Horn with Trumpet

12-30Vdc/Vac, 40-260Vdc/Vac 50/60Hz
Max. 100dB(A) @ 1m - 91dB(A) @ 10ft/3m
3 buzzer/alarm tones

94.2mm x 177.5mm (3.71" x 6.99")

Ref: 2-21-180

H110T Signaling Horn with Trumpet

12-30Vdc/Vac, 40-260Vdc/Vac 50/60Hz
Max. 110dB(A) @ 1m - 101dB(A) @ 10ft/3m
3 buzzer/alarm tones with 3 stages/channels

135.0mm x 336.7mm (5.32" x 13.27")

Combination signal & filament lamp

Ref: 2-31-320

H100TF Trumpet Horn & Filament Lamp Flashing Beacon

12Vdc, 24Vdc & 115Vac, 230Vac
Max. 100dB(A) @ 1m - 91dB(A) @ 10ft/3m
3 buzzer/alarm tones

Filament lamp BA9s, 5W.

Flash frequency 1Hz.

Effective intensity 2cd.

Amber, Blue, Clear, Green, Red & Yellow lenses

94.2mm x 241.2mm (3.41" x 9.5")

Combination Signal & Rotating Beacon

Ref: 2-31-330

H110TR Trumpet Horn & Rotating Beacon

12Vdc, 24Vdc & 115Vac, 230Vac
Max. 110dB(A) @ 1m - 101dB(A) @ 10ft/3m
3 buzzer/alarm tones with 3 stages/channels

Halogen Lamp G6,35/GY6,35, 20/25W.

Effective intensity 125cd.

Amber, Blue, Clear, Green, Magenta, Red & Yellow lenses

135.0mm x 462.9mm (5.32" x 18.24")

Combination signals & Xenon strobe

Ref: 2-31-280

H100BX Signal Horn & Xenon Strobe

24Vdc & 24Vac, 115Vac, 230Vac
Max. 100dB(A) @ 1m - 91dB(A) @ 10ft/3m
3 buzzer/alarm tones

Xenon strobe 1 Joule.

Effective intensity 50cd.

Amber, Blue, Clear, Green, Red & Yellow lenses

94.2mm x 135.2mm (3.41" x 5.33")

Ref: 2-31-300

H100TX Trumpet Horn & Xenon Strobe

24Vdc & 24Vac, 115Vac, 230Vac
Max. 100dB(A) @ 1m - 91dB(A) @ 10ft/3m
3 buzzer/alarm tones

Xenon strobe 1 Joule

Effective intensity 50cd.

Amber, Blue, Clear, Green, Red & Yellow lenses

94.2mm x 241.2mm (3.41" x 9.5")

Ref: 2-31-340

H110TX Trumpet Horn & Xenon Strobe

12Vdc, 24Vdc, 48Vdc & 12Vac, 24Vac, 48Vdc, 115Vac, 230Vac
Max. 110dB(A) @ 1m - 101dB(A) @ 10ft/3m
3 buzzer/alarm tones with 3 stages/channels

Xenon strobe 5 Joule.

Effective intensity 250cd.

Amber, Blue, Clear, Green, Magenta, Red & Yellow lenses

135.0mm x 462.9mm (5.32" x 18.24")

Combination signals & L.E.D. beacon

Ref: 2-31-290

H100BL Signal Horn & L.E.D Beacon

12-30Vdc, 90-260Vdc/Vac
Max. 100dB(A) @ 1m - 91dB(A) @ 10ft/3m
3 buzzer/alarm tones

Array of 9 high powered L.E.D.s.

Effective intensity 5.5cd.

Amber, Blue, Clear (white L.E.D.), Green, Red & Yellow lenses

94.2mm x 135.2mm (3.41" x 5.33")

Ref: 2-31-310

H100TL Trumpet Horn & L.E.D Beacon

12-30Vdc, 90-260Vdc/Vac
Max. 100dB(A) @ 1m - 91dB(A) @ 10ft/3m
3 buzzer/alarm tones

Array of 9 high powered L.E.D.s.

Effective intensity 5.5cd.

Amber, Blue, Clear (white L.E.D.), Green, Red & Yellow lenses

94.2mm x 241.2mm (3.41" x 9.5")

Ref: 2-31-350

H110TL Trumpet Horn & L.E.D Beacon

10-30Vdc, 48Vdc, 90-260Vac
Max. 110dB(A) @ 1m - 101dB(A) @ 10ft/3m
3 buzzer/alarm tones with 3 stages/channels

Array of 16 high powered L.E.D.s.

Effective intensity 19cd.

Amber, Blue, Clear (white L.E.D.), Green, Red & Yellow lenses

135.0mm x 462.9mm (5.32" x 18.24")



Spectra

Visual signals



B300STR/B300LDA/B300SLF/
B300FLF/B300SLH/B300FLH



B400STR/B400LDA/B400SLF/
B400FLF/B400SLH/B400FLH



B300RTH



B400RTH

The Spectra visual signaling range includes Xenon, LED and Halogen light sources.

The B400 and the compact B300 series, provide reliable and robust visual signalling solutions. The UV stable, impact resistant polycarbonate enclosures, sealed to IP65, are ideal for a host of applications such as process control and machine safety warning, status indication and general alert.

Range info

Material

High impact UL94 V0 (f1) PC

Ingress Protection

IP65

Fixings

Stainless steel.

Mounting

The surface mount base can also be supplied with a right angle bracket or with a pole mounted assembly.

Cable entries

1 x 5-7mm push through grommet

B300: 1 x M20 cable entry

B400: 2 x M20 cable entry

Enclosure color

Black

Features

Range of functions and technologies.
Suitable for indoor and outdoor use.
Beacons can be linked together to create a sequence of signals.

B300 beacons

Amber, Blue, Clear, Green, Red & Yellow lenses

Diameter 100.0mm x 150.0mm high

Diameter 3.94" x 5.91" high

Ref: 2-12-010

B300RTH Rotating Beacon [Halogen Bulb]

12Vdc, 24Vdc, & 115Vac, 230Vac 50/60Hz.

Halogen Lamp G6,35/GY6,35. 20/25W

Effective intensity 125cd.

Diameter 100.0mm x 150.0mm high

Diameter 3.94" x 5.91" high

Ref: 2-13-030

B300STR Xenon Strobe Beacon

12Vdc, 24Vdc, 48Vdc & 12 Vac, 24Vac, 48Vac, 115Vac, 230Vac 50/60Hz.

5 Joule Xenons Beacon.

Effective intensity 250cd

Flash rate 1Hz (60fpm).

DC units optionally 1.5Hz & double strike.

Ref: 2-14-020

B300LDA L.E.D Beacon [Multi-Function Array]

10-50Vdc & 90-230Vac 50/60Hz

Array of 16 high output L.E.D.s.

Effective intensity 19cd.

Functions: 4 rotating configurations.

4 flashing configurations.

Steady mode for status applications.

B400 beacons

Amber, Blue, Clear, Green, Red & Yellow lenses

Diameter 140.0mm x 220.0mm high

Diameter 5.52" x 8.67" high

Ref: 2-12-020

B400RTH Rotating Beacon [Halogen Bulb]

12Vdc, 24Vdc, & 115Vac, 230Vac 50/60Hz.

Halogen Lamp G6,35/GY6,35. 35/40W..

Effective intensity 325cd.

Diameter 140.0mm x 220.0mm high.

Diameter 5.52" x 8.67" high.

Ref: 2-13-040

B400STR Xenon Strobe Beacon

24Vdc, 48Vdc & 24Vac, 48Vac, 115Vac, 230Vac 50/60Hz.

15 Joule Xenons Beacon.

Effective intensity 750cd.

1Hz flash rate automatically synchronized.

Ref: 2-14-030

B400LDA L.E.D Beacon [Multi-Function Array]

10-50Vdc & 115Vac, 230Vac 50/60Hz

Array of 32 high output L.E.D.s.

Effective intensity 30cd.

Functions: 4 rotating configurations.

4 flashing configurations.

Steady mode for status applications.

Accessories

A range of right angle mounting brackets and pole mounting assemblies are available for the Spectra beacon range and also spare lamps and bulbs.

Spectra

Panel mount visual range



B100STR/B100LDA/B100SLF/B100FL



B200STR/B200LDA/B200SLF/B200FLF



E2S22D



E2S28D

The Spectra range panel & surface mount beacons and buzzers come in a range of sizes and technologies. The B100 and B200 series is comprised of a Xenon strobe beacon and a steady L.E.D array version.

The B200 offers a compact signal ideal for operator indication whilst the B100 panel mount base incorporates a pluggable terminal block ensuring rapid installation and maintenance. The E2S22D and E2S28D with industry standard 22 and 28mm panel cut outs provide solutions for general signaling for control panels and instrument clusters.

Range info

Material

High impact UL94 V0 (f1) PC

Ingress Protection

IP65

Fixings

Stainless steel.

Mounting

Panel mount

Terminals

B200: 0.5 to 1.5mm².

B100: 0.5 to 1.5mm² pluggable.

Features

Bayonet fixing lens.

Anti-tamper locking screw.

Accessories

A range of right angle mounting brackets and pole mounting assemblies are available for the Spectra beacons as well as lamps and bulbs.

B200 beacons

Amber, Blue, Clear, Green, Red & Yellow lenses
Diameter 60.0mm x 80.0mm beacon height.
Diameter 2.36" x 3.15" beacon height.

Ref: 2-13-060

B200STR Xenon Strobe Beacon

10-30Vdc & 115Vac, 230Vac 50/60Hz

1 Joule Xenons Beacon.

Effective intensity 50cd

Flash frequency 0.75 Hz.

Ref: 2-14-050

B200LDA L.E.D Permanent Beacon

10-30Vdc & 90-230Vac

Array of 9 high powered L.E.D.s.

Effective intensity 5.5cd

Permanent beacon.

B100 Panel mount beacons

Amber, Blue, Clear, Green, Red & Yellow lenses
Diameter 60.0mm x 65.5mm beacon height.

Diameter 2.36" x 2.58" beacon height.

Ref: 2-13-050

B100STR Panel Mount Xenon Strobe

10-30Vdc & 115Vac, 230Vac 50/60Hz

1 Joule Xenons Beacon.

Effective intensity 50cd

Flash frequency 0.75 Hz.

Ref: 2-14-040

B100LDA Panel Mount L.E.D Beacon

10-30Vdc & 90-230Vac

Array of 9 high powered L.E.D.s.

Effective intensity 5.5cd

Permanent beacon.

E2S22D Panel buzzers & lights

Ingress Protection

IP65.

Mounting

Panel mount - 22mm

Terminals

Screw terminals with wire guards with ability to daisy chain the lights into an array.

Voltage

24 or 48Vac/dc, 110-130vac/dc or 230Vac

Ref: 2-21-210

E2S22DBZ Buzzer: 80dB @ 10cm

E2S22DFS Flashing Light: Flash rate: 2Hz

E2S22DBF Combination: 80dB @ 10cm with steady red L.E.D.

E2S28D Panel buzzers

Mounting

Panel mount - 28mm

Terminals

6.35mm/0.25" quick-connect blades for push-on or direct solder attachment.

Max. Output

95±5 dB(A) at 48 Vdc at 24 inches (61 cm)

Ref: 2-21-220

E2S28DMC948: Continuous tone 9-48 Vdc

E2S28DMC201: Continuous tone 30-120 Vac

E2S28DMC301: Cont. tone 130-220 Vac

E2S28DMB530: Dual function beep/

continuous tone 5-30Vdc

Spectra

Traffic light/access control visual signals and alarm horn sounders



B350TLA/B350TSB



B450TLA/B450TSB/B450TDB



B300SND



B400SND

The Spectra range includes traffic light / access control indicators utilizing the latest in LED technology. The B450 and the compact B350 lights can be complemented by the B400SND or B300SND alarm horn sounder to provide an additional audible signal.

The UV stable, impact resistant polycarbonate enclosures, sealed to IP65, are ideal for a host of applications such as traffic management, loading bays, fork lift access as well as process control and machine safety warning, status indication, and general alert.

Range info

Material

High impact UL94 V0 (f1) PC

Ingress Protection

IP65

Fixings

Stainless steel.

Mounting

Surface mount (Wall mount bracket available)

Cable Entries

1 x 5-7mm push through grommet
1 x M20 cable entry

Enclosure color

Black

Features

Bayonet fixing lens.
Anti-tamper locking screw.

B350 traffic light indicators

Diameter 100.0mm x 139.7mm height.
Diameter 3.94" x 5.5" height.

Ref: 2-11-050

B350TLA L.E.D Traffic Light

10-30Vdc & 90-230Vac 50/60Hz
Array of 15 high output L.E.D.s.
Effective intensity 54cd.
Permanent (steady) beacon.
Amber, Blue, Green & Red L.E.D's.

B450 traffic light indicators

Diameter 140.0mm x 177.0mm height.
Diameter 5.52" x 6.97" height.

Ref: 2-11-020

B450TLA L.E.D Traffic Light

10-30Vdc & 90-230Vac 50/60Hz
Array of 24 high output L.E.D.s.
Effective intensity 54cd.
Permanent (steady) beacon.
Amber, Blue, Green & Red L.E.D's.

B300SND Signaling Horn

Ref: 2-21-140

B300SND Signaling Horn

12-30Vac/dc, 40-260Vac/dc
Max. 98dB(A) @ 1m - 89dB(A) @ 10ft/3m
3 alarm tones.
Diameter 100.0mm x 98.0mm height.
Diameter 3.94" x 4.04" height.

B400SND Signaling Horn

Ref: 2-21-150

B400SND Signaling Horn

10-30Vac/dc, 40-260Vac/dc
Max. 110dB(A) @ 1m - 101dB(A) @ 10ft/3m
3 alarm tones
Remotely selectable second stage.
Diameter 140.0mm x 119.5mm height.
Diameter 5.52" x 4.71" height.

Special Applications & Wide Area



Hootronic & GPH

Electro-mechanical alternative



HA105N



HA121



HMA121

The Hootronic range utilizes the latest in amplifier and digital to analogue conversion technology to create alternatives to traditional mechanical industrial signals such as sirens, buzzers, claxons and bells, with improved reliability at significantly lower current consumption and without a reduction in performance.

The products are zero maintenance (continuously rated) and accurately reproduce the following sounds: 470Hz industrial hooter, 1.7KHz high frequency sounder, 1.0KHz medium frequency siren, 450Hz buzzer and a mechanical bell. Each of these sounds have two additional, remotely selectable, alarm stages. The remote switch-off function generates genuine 'tail off' to sound when the alarm is terminated.

The GPH range is a UL approved general purpose signal in a lightweight, robust PC enclosure.

The three alarm tones include a simulated electro-mechanical buzzer sound, traditionally only available from heavy, unreliable mechanical devices, plus two further warning tones. Suitable for 4" back box mounting the range includes surface mount and flush mount versions.

Range info

Material

HA105N, HA121 & HMA121:
High impact UL94 V0 & 5VA FR ABS
GPH Buzzers: High impact UL94 V0 (f1) PC

Ingress Protection

HA105N, HA121, HMA121: IP66.
HMA121: IP66/67.
GPH: IP66 Type 4/4X/13

Fixings

Stainless steel.

Mounting

HA105N/HA121: Surface mount - via external mounting lugs or internal BESA compatible fixing positions.
HMA121: Ratchet adjustable 'U' bracket.
GPH buzzers: surface mount.

Cable entries

2 x M20 or 20mm clearance entries.

Features

Automatic synchronization on multi-sounder system.
Continuously rated.
Duplicate cable terminations (in & out for daisy-chain installations).
Tropicalization available on request.

Alarm Sounder/Horn

Ref: 2-23-010

HA105N Hootronic

24Vdc (10-30Vdc) & 115/230Vac 50/60Hz
Max output 112dB(A) @ 1m
- 103dB(A) @ 10ft/3m
5 electro-mechanical replacement sounds with 3 stages/channels
130.0mm x 130.0mm x 133.5mm
5.12" x 5.12" x 5.26"

Ref: 2-23-020

HA121 Hootronic

10-30Vdc & 24/230Vac 50/60Hz
Max output 121dB(A) @ 1m
- 112dB(A) @ 10ft/3m
5 electro-mechanical replacement sounds with 3 stages/channels
210.0mm x 190.0mm x 191.5mm
8.27" x 7.48" x 7.54"

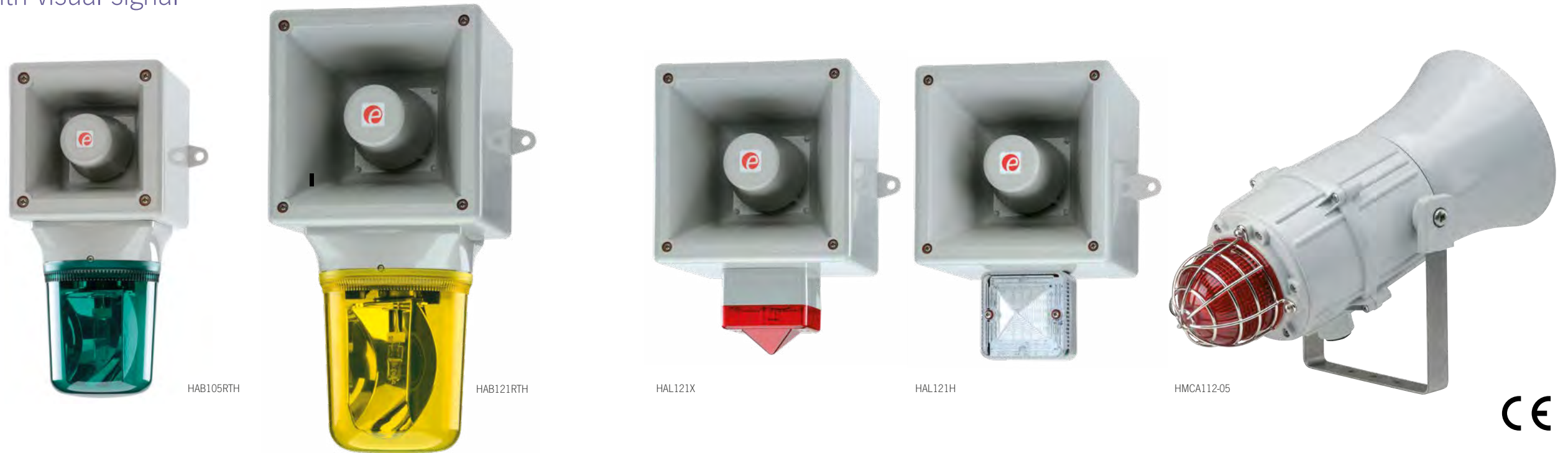
Ref: 2-23-030

HMA121 Hootronic

24Vdc (10-30Vdc) & 115/230Vac 50/60Hz
Max output 124dB(A) @ 1m
- 115dB(A) @ 10ft/3m
5 electro-mechanical replacement sounds with 3 stages/channels
220.0mm x 323.5mm (8.66" x 12.74")

Hootronic

Electro-mechanical alternative with visual signal



The Hootronic range utilizes the latest in amplifier and digital to analogue conversion technology to create alternatives to traditional mechanical industrial signals such as sirens, buzzers, claxons & bells, with improved reliability at significantly lower current consumption and without a reduction in performance.

The products are zero maintenance (continuously rated) and accurately reproduce the following sounds: 470Hz industrial hooter, 1.7KHz high frequency sounder, 1.0KHz medium frequency siren, 450Hz buzzer and a mechanical bell. Each of these sounds have two additional, remotely selectable, alarm stages. The remote switch-off function generates genuine 'tail off' to sound when the alarm is terminated.

The combination versions of the Hootronic range provide additional visual signaling to enforce the warning provided by the alarm horn. A variety of enclosure types and sizes are available to suit any application.

Range info

Material

Enclosure High impact UL94 V0 & 5VA FR ABS

Ingress Protection

IP66

HMA121: IP66/67.

Fixings

Stainless steel.

Mounting

HA105*/HA121*: Surface mount - via external mounting lugs or internal BESA compatible fixing positions.

HMCA121: Ratchet adjustable 'U' bracket.

Cable entries

2 x M20 cable entries.

Features

Automatic synchronization on multi-sounder system.

Continuously rated.

Duplicate cable terminations

(in & out for daisy-chain installations).

Tropicalization available on request.

Combination Signal with Rotating Beacon

Ref: 2-33-030

HAB105RTH

Hootronic & Rotating Beacon

24Vdc (10-30Vdc) & 115/230Vac 50/60Hz

Max output 112dB(A) @ 1m

- 103dB(A) @ 10ft/3m

5 electro-mechanical replacement sounds with 3 stages/channels

Halogen Bulb G6,35/GY6,35.

Effective intensity 125cd

Amber, Blue, Clear, Green, Red & Yellow lenses

RAL3000 Red or RAL7038 Grey housing.

130.0mm x 130.0mm x 273.9mm

5.12" x 5.12" x 10.78"

Ref: 2-33-040

HAB1215RTH

Hootronic & Rotating Beacon

12/24Vdc & 115/230Vac 50/60Hz.

Max output 121dB(A) @ 1m

- 112dB(A) @ 10ft/3m

5 electro-mechanical replacement sounds with 3 stages/channels

Halogen Bulb G6,35/GY6,35.

Effective intensity 325cd

Amber, Blue, Clear, Green, Red & Yellow lenses

RAL3000 Red or RAL7038 Grey housing.

190.0mm x 388.5mm x 191.5

7.48" x 15.29" x 7.54"

Combination Signal with Xenon Strobe

Ref: 2-33-010

HAL121X Hootronic & Xenon Strobe

12/24/115Vac, 230Vac 50/60Hz.

Max output 121dB(A) @ 1m

- 112dB(A) @ 10ft/3m

5 electro-mechanical replacement sounds with 3 stages/channels

5 Joule Xenon beacon.

Effective intensity 250cd

RAL3000 Red or RAL7038 Grey housing.

190.0mm x 275.9mm x 191.5mm

7.48" x 10.9" x 7.5"

Combination Signal with L.E.D. Beacon

Ref: 2-33-020

HAL121H Hootronic & L.E.D Beacon

12/24Vdc & 115/230Vac 50/60Hz.

Max output 121dB(A) @ 1m

- 112dB(A) @ 10ft/3m

5 electro-mechanical replacement sounds with 3 stages/channels

Array of 24 high intensity L.E.D.s.

Effective intensity 176cd

Amber Blue, Green, Red and White lenses

RAL3000 Red or RAL7038 Grey housing.

190.0mm x 275.9mm x 190.05mm

7.48" x 10.9" x 7.48"

Electronic Siren, Buzzer, Claxon & Bell with Xenon Strobe

Ref: 2-33-050

HMCA112-05 & Xenon Strobe

12/24Vdc & 115/230Vac 50/60Hz.

Max output 124dB(A) @ 1m

- 115dB(A) @ 10ft/3m

5 electro-mechanical replacement sounds with 3 stages/channels

5 Joule Xenon beacon.

Effective intensity 250cd

Amber, Blue, Clear, Green, Red & Yellow lenses

Grey RAL7038 housing.

181.0mm x 385.1mm (7.13" x 15.17")

Wide Area Sirens

General signaling



A131

The A131 is a high output 131dB(A) @ 1 metre electronic siren in a compact and easy to install package. Using up to four speakers, it can be mounted in a variety of ways and is ideal as a plant alarm to cover outdoor locations, areas with high background noise or smaller COMAH (Seveso II) applications with sound coverage requirements up to 300m.

Offering a choice of three alarm stages, selected from a choice 45 tones including many national standard tones, it can be incorporated in fire, security and general alarm systems where existing equipment is not powerful enough or the system needs expanding.

131dB(A) audible warning system

Ref: 3-11-010

A131 Alarm sounder

Max. 131dB(A) @ 1m - 102dB(A) @ 30m

45 alarm tones with 3 stages/channels

Automatic synchronization

300m range

24Vdc (18-30Vdc)

115Vac & 230Vac

Aluminum/ABS horn enclosure.

Control panel available with battery back-up.

IP66 ingress protection.

1 to 4 horn configurations



A141

The A141 is the latest in a new generation of high output electronic sounders from E2S which are ideal for wide area and disaster warning applications such as COMAH (Seveso II) Alarm, Toxic Gas Release, Fire, Security, Flood Warning, Tsunami Alert and Civil Defence requiring sound coverage up to 750m.

With a choice of 45 standard warning tones including many of the standard international signals the A141 can offer up to 4 different stages of alarm. A "Hootronic" version of the A141 is also available which replicates the traditional signaling sounds of bells, buzzers, sirens and claxons.

By re-playing digital recordings of these products, the Hootronic produces the exact sound but with improved reliability and rating compared to electro-mechanical devices. E2S has considerable experience in this field and is able to offer full pre and post installation support including assistance with siren selection.

141dB(A) audible warning system

Ref: 3-11-020

A141 Alarm sounder

Max. 141dB(A) @ 1m - 112dB(A) @ 30m

45 alarm tones with 3 stages/channels

Automatic synchronization

750m range

24Vdc (18-30Vdc)

115Vac & 230Vac

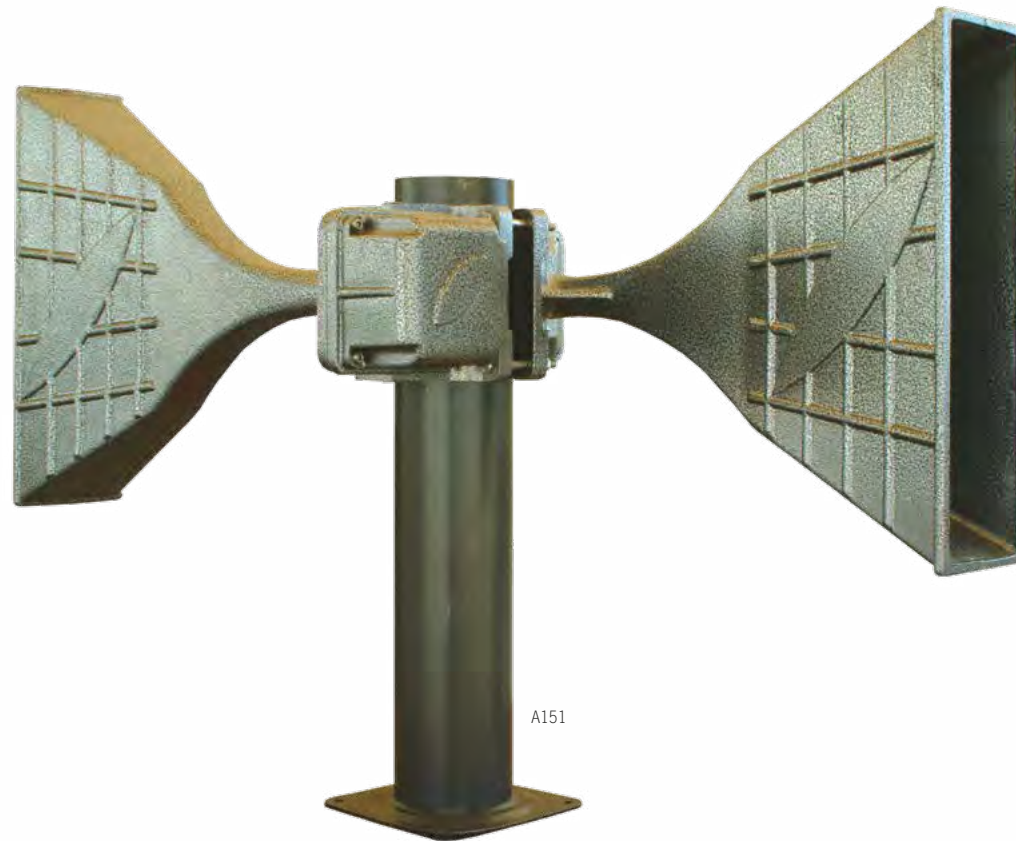
Glass fibre horn enclosure.

Control panel available with battery back-up

IP65 ingress protection

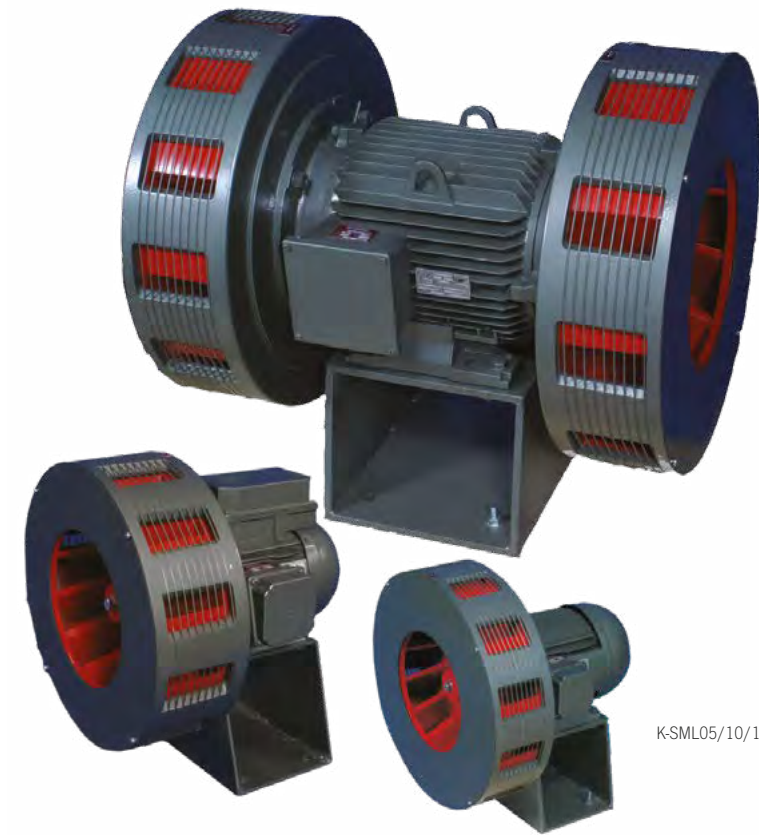
Wide Area Sirens

General signaling



E2S wide area products provide solutions for public and mass notification for a range of applications including tsunami warning alert, disaster warning and evacuation warning as well as for many other emergency signaling requirements.

E2S can provide advice and site surveys to assist with system specifications. The advanced system options include battery back-up and radio control options.



K-SML Motor driven sirens

Enclosure: Aluminum
Color: Grey
Frequency: 560Hz
Tones: Continuous or Wail Tone
Voltages: 400V 3 phase

Ref: 3-21-010

K-SML05

1Km effective range
2.2kW motor
Max. 135dB(A) @ 1m

K-SML10

1.5Km effective range
4.0kW motor
Max. 140dB(A) @ 1m

K-SML15

2.5Km effective range
7.5kW motor
Max. 145dB(A) @ 1m

A151 Wide area system

E2S offer a range of solutions for disaster and outdoor warning:

- Toxic Gas Release (COMAH, SEVESO II)
- Flood Warning
- Tsunami Alert
- Civil Defence
- Tornado and Weather Warning
- Wide Area Fire and Security Alert

E2S global network



- | | | | |
|----------------|------------|--------------|---------------------|
| Afghanistan | Finland | Lebanon | Slovakia |
| Algeria | France | Libya | South Africa |
| Australia | Germany | Malaysia | South Sudan |
| Austria | Ghana | Malta | Spain |
| Azerbaijan | Hungary | Mauritania | Sultanate of Oman |
| Bahrain | India | Mauritius | Sweden |
| Belgium | Indonesia | Mexico | Switzerland |
| Brazil | Iran | Morocco | Syria |
| Canada | Iraq | Netherlands | Taiwan |
| Canary Islands | Ireland | New Zealand | Tanzania |
| Chile | Israel | Nigeria | Thailand |
| China | Italy | Norway | Trinidad and Tobago |
| Cyprus | Japan | Philippines | Tunisia |
| Czech Republic | Jordan | Poland | Turkey |
| Denmark | Kazakhstan | Qatar | U.A.E |
| Egypt | Kenya | Russia | U.S.A |
| Estonia | Korea | Saudi Arabia | United Kingdom |
| Ethiopia | Kuwait | Singapore | Yemen |

The benefits of working with E2S

- E2S is the world's leading independent signaling manufacturer
- Our life saving signaling products help you create safer environments
- We have global reach and local technical support on every continent
- Working closely with you means we meet your specific needs
- Our products have proven performance across a range of applications
- We continually invest in the latest technology, innovation and research to create the best signaling products possible



E2S Warning Signals

Impress House, Mansell Road
London, W3 7QH, UK

Tel: + 44 (0) 20 8743 8880

Fax: + 44 (0) 20 8740 4200

sales@e2s.com

www.e2s.com

17633 Telge Road,
Cypress, TX 77429, U.S.A.

Tel: 281 377 4401

Fax: 281 440 4040